

Changed Jan 14, 2025 17:52

Reviewed Jan 14, 2025 17:52

Erudus ID b390eeec09a642fe9a0d08368faaa07d

Version 1.0

Status Published

19526

Red Bull Energy Drink 250ml 24 Pack PM 1.65

Red Bull Energy Drink 24x

PRODUCT DESCRIPTION

Red Bull Energy Drink 250ml 24 Pack PM 1.65

| | |
|---------------------------|----------------------------------|
| Brand | Red Bull |
| Manufacturer Product Code | RB246800 |
| Product Type | Drink |
| Product Category | Sports, Energy & Wellness Drinks |
| Storage Type | Ambient |
| Erudus ID | b390eeec09a642fe9a0d08368faaa07d |
| Specification Type | Drinks |

| | |
|----------------------|----------------|
| Inner Component GTIN | 90457999 |
| Outer Case GTIN | 09002490280284 |



INGREDIENTS

Ingredient Declaration

Water, Sucrose, Glucose, Acidifier Citric Acid, Carbon Dioxide, Taurine (0.4%), Acidity Regulator (Sodium Carbonates, Magnesium Carbonate), Caffeine (0.03%), Vitamins (Niacin, Pantothenic Acid, B6, B12), Flavourings, Colours (Caramel, Riboflavin)

ALLERGENS

Product Contains:

| | | | |
|--------------------------------------|----|-------------------------------|----|
| Celery/Celeriac | No | Mustard | No |
| Cereals Containing Gluten | No | Nuts (Tree) | No |
| Barley | No | Almond nuts | No |
| Oats | No | Brazil nuts | No |
| Rye | No | Cashew nuts | No |
| Wheat (including Spelt and Khorasan) | No | Hazelnuts | No |
| Crustacea | No | Macadamia (Queensland) nuts | No |
| Eggs | No | Pecan nuts | No |
| Fish | No | Pistachio nuts | No |
| Lupin | No | Walnuts | No |
| Milk | No | Peanuts | No |
| Molluscs | No | Sesame Seeds | No |
| | | Soybeans | No |
| | | Sulphur Dioxide and Sulphites | No |

Additional Allergen Information

High caffeine content. Not recommended for children or pregnant or breast-feeding women (32 mg/100 ml). Consume moderately.

SUPPLEMENTARY
INGREDIENT
INFORMATION

| | |
|--------------------------------|----|
| Palm Oil | No |
| Hydrogenated Vegetable Oil/Fat | No |
| GM Protein/DNA | No |

ADDITIVES

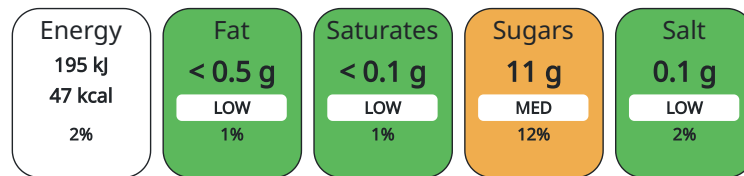
| | | | |
|------------------------------|----|--------------------------|----|
| <i>Product Contains:</i> | | | |
| Artificial Antioxidants | No | Artificial Flavourings | No |
| Artificial Colours | No | Artificial Preservatives | No |
| Artificial Flavour Enhancers | No | Artificial Sweeteners | No |

DIET SUITABILITY

| | | | |
|------------|--------------|-----------------|--------------|
| Vegan Diet | Suitable for | Vegetarian Diet | Suitable for |
| Halal Diet | Suitable for | Kosher Diet | Suitable for |

NUTRITIONAL
INFORMATION AS
SOLD

Each 100g/ml portion contains:



of your reference intake.

Typical values per 100g/ml : Energy 47kcal / 195kJ

| Nutrient | per 100ml | RI per 100ml | per 250ml serving | RI per 250ml serving |
|--------------------|-----------|--------------|-------------------|----------------------|
| Energy (kJ) | 195 kJ | 2% | 487.5 | 6% |
| Energy (kcal) | 46.6 kcal | 2% | 116.5 | 6% |
| Fat | < 0.5 g | 1% | 1.25 g | 2% |
| of which Saturates | < 0.1 g | 1% | 0.25 g | 1% |
| Carbohydrate | 11 g | 4% | 27.5 g | 11% |
| of which Sugars | 11 g | 12% | 27.5 g | 31% |
| Protein | 0 g | | 0 g | |
| Salt | 0.1 g | 2% | 0.25 g | 4% |

Serving Size 250 ml

HANDLING &
STORAGE
INFORMATION

Directions For Use

Best served chilled

Storage Instructions

Cool, dry storage

Shelf Life from Time of Production 720 Days

ORIGIN

Product Country of Origin United Kingdom

Origin of the Primary Ingredient

PRODUCT
CHARACTERISTICS

Standards Testing

| | | | |
|---|----|-----------------------------------|----|
| Do you undertake trend analysis of microbiological results? | No | Is shelf life testing undertaken? | No |
|---|----|-----------------------------------|----|

CONFIGURATION

Case Configuration Inner Pack Configuration

Variable Inner Components in Outer Case No

Total Quantity of Inner Components in Outer Case 24 Units

Is the Outer Case Splittable? Yes

PRODUCT WEIGHTS

| | |
|--------------------------------|---------|
| Inner Component | |
| Outer Case | |
| Outer Case Gross Weight | 6.51 kg |
| Outer Case Net Weight | 0.23 kg |

PRODUCT DIMENSIONS

| | |
|-------------------------------|--------|
| Inner Component | |
| Inner Component Depth | 134 mm |
| Inner Component Width | 53 mm |
| Inner Component Height | 134 mm |

| | |
|--------------------------|--------|
| Outer Case | |
| Outer Case Depth | 328 mm |
| Outer Case Width | 216 mm |
| Outer Case Height | 136 mm |

PALLET INFORMATION

| | | | |
|---|-----------|----------------------------|----------|
| Quantity of Cases Per Pallet Layer | 16 Cases | Pallet Height | 1.38 MTR |
| Quantity of Layers Per Pallet | 9 Layers | Pallet Gross Weight | 968 kg |
| Quantity of Cases Per Pallet | 144 Cases | | |

PACKAGING

| Inner Component Packaging | | | | | | |
|---------------------------|-----------------|---------|---------------------|------------|------------|-----------|
| Type | Materials | Weight | Recycled Material % | Recyclable | Returnable | Composite |
| Can | Aluminium | 10.65 g | | | | |
| Outer Case Packaging | | | | | | |
| Type | Materials | Weight | Recycled Material % | Recyclable | Returnable | Composite |
| Can | Plastic | 13.3 g | | | | |
| Can | Paper/Cardboard | 49 g | | | | |

OTHER INFORMATION CONTACT INFORMATION

Address
 Red Bull
 42 Earlham St, Seven Dials
 Covent Garden
 WC2H 9LA
 London
 London
 United Kingdom

sydney.bron@redbull.com
 07890275361

The information on the [Erudus System](#) has been supplied by the manufacturers of the products and, whilst the owners of the Erudus System take steps to ensure the information is regularly updated, they give no warranty and no guarantee that the information is accurate. Product information and ingredients may change, please always read product labels carefully in addition to using the information provided by Erudus.

We do not accept liability for any inaccuracies or incorrect information contained on this site.
 Please visit <http://www.erudus.com/terms-and-conditions> for full terms and conditions.