

Changed Apr 27, 2026 00:00

Reviewed Apr 23, 2026 09:29

Erudus ID d3bc2f1b994a4c9da523bf756cdf9870

Version 6.1

Status Published

19579

# Pringles Original Crisps 12x40g

Pringles Original Crisps 12x0.48kg

## PRODUCT DESCRIPTION

A classic flavour for a classic crisp, Pringles Original Crisps are the iconic crisps certain to satisfy even the most intense of cravings. These delectable crisps are perfect for any party or get together, or afternoon snacks, or even a quick nibble in front of the TV at night. No matter when you enjoy Pringles Original Crisps they will always stay fresh with our iconic resealable container. Pop, Play, Eat with Pringles Original Crisps. \*Please always check the label of the pack you receive as there may be differences from the information you read on site due to stock changeover

Brand	<a href="#">Kellanova (Kellogg's)</a>
Manufacturer Product Code	7000271000
Product Type	Food
Product Category	Crisps & Snacks
Storage Type	Ambient
Erudus ID	d3bc2f1b994a4c9da523bf756cdf9870
Specification Type	Generic



Inner Component GTIN 5053990107339

Outer Case GTIN 5053990107476



## INGREDIENTS

### Ingredient Declaration

Dehydrated potatoes, sunflower oil, corn flour, **WHEAT** flour, rice flour, maltodextrin, emulsifier (E471), rapeseed oil, salt, colour (annatto norbixin)

ALLERGENS

Product Contains:

Celery/Celeriac	No	Mustard	No
Cereals Containing Gluten	Yes	Nuts (Tree)	No
Barley	No	Almond nuts	No
Oats	No	Brazil nuts	No
Rye	No	Cashew nuts	No
Wheat (including Spelt and Khorasan)	Yes	Hazelnuts	No
Crustacea	No	Macadamia (Queensland) nuts	No
Eggs	No	Pecan nuts	No
Fish	No	Pistachio nuts	No
Lupin	No	Walnuts	No
Milk	May Contain	Peanuts	No
Molluscs	No	Sesame Seeds	No
		Soybeans	May Contain
		Sulphur Dioxide and Sulphites	No

Risk Source:

Milk (Risk Source)	Line	Soybeans (Risk Source)	Line
--------------------	------	------------------------	------

Allergen Statement On Pack

Contains wheat

Additional Allergen Information

May contain milk, soy

SUPPLEMENTARY INGREDIENT INFORMATION

Palm Oil	No
GM Protein/DNA	No

ADDITIVES

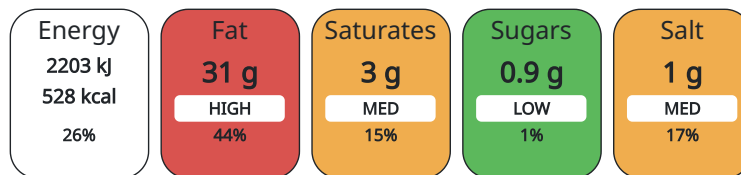
Product Contains:

DIET SUITABILITY

Vegan Diet	Suitable for	Vegetarian Diet	Suitable for
Halal Diet	Suitable for	Kosher Diet	No

NUTRITIONAL INFORMATION AS SOLD

Each 100g/ml portion contains:



of your reference intake.

Typical values per 100g/ml : Energy 528kcal / 2203kj

Nutrient	per 100g	RI per 100g
Energy (kJ)	2203 kJ	26%
Energy (kcal)	528 kcal	26%
Fat	31 g	44%
of which Saturates	3 g	15%
Carbohydrate	54 g	21%
of which Sugars	0.9 g	1%
Fibre	4.1 g	
Protein	6.2 g	12%
Salt	1 g	17%

HFSS (HIGH IN FAT, SALT AND SUGAR) HANDLING & STORAGE INFORMATION	<b>HFSS Status</b>	Yes	
	<b>Directions For Use</b>	Eat as directed	
	<b>Storage Instructions</b>	Store in a cool dry place.	
	<b>Shelf Life from Time of Production</b>	456 Days	
ORIGIN	<b>Product Country of Origin</b>	Poland	
	<b>Origin of the Primary Ingredient</b>	Not Applicable	
PRODUCT CHARACTERISTICS CONFIGURATION	<b>Standards Testing</b>		
	<b>Case Configuration</b>		<b>Inner Pack Configuration</b>
	<b>Total Quantity of Inner Components in Outer Case</b>	12 Units	
	<b>Is the Outer Case Splittable?</b>	No	
PRODUCT WEIGHTS	<b>Inner Component</b>		
	<b>Variable Weight Consumer Item</b>	No	
	<b>Inner Component Weight</b>	0.48 kg	
	<b>Outer Case</b>		
	<b>Outer Case Gross Weight</b>	0.83 kg	
	<b>Outer Case Net Weight</b>	0.48 kg	
PRODUCT DIMENSIONS	<b>Inner Component</b>		
	<b>Inner Component Depth</b>	79 mm	
	<b>Inner Component Width</b>	79 mm	
	<b>Inner Component Height</b>	87 mm	
	<b>Outer Case</b>		
	<b>Outer Case Depth</b>	325 mm	
	<b>Outer Case Width</b>	240 mm	
	<b>Outer Case Height</b>	90 mm	
PALLET INFORMATION	<b>Quantity of Cases Per Pallet Layer</b>	15 Cases	<b>Pallet Type</b> UK Standard Pallet
	<b>Quantity of Layers Per Pallet</b>	12 Layers	<b>Pallet Height</b> 1.24 MTR
	<b>Quantity of Cases Per Pallet</b>	180 Cases	<b>Pallet Gross Weight</b> 178.19 kg
OTHER INFORMATION CONTACT INFORMATION	<b>Commodity Code</b>	19059080	
	<b>Address</b>	Kellanova (Kellogg's) Kellogg Orange Tower M50 2HF Salford Greater Manchester England  stephen.allcock2@kellanova.com 07385931175	<b>Commercial</b> Stephen Allcock stephen.allcock2@kellanova.com 07385931175 National Account Executive

The information on the [Erudus System](#) has been supplied by the manufacturers of the products and, whilst the owners of the Erudus System take steps to ensure the information is regularly updated, they give no warranty and no guarantee that the information is accurate. Product information and ingredients may change, please always read product labels carefully in addition to using the information provided by Erudus.

We do not accept liability for any inaccuracies or incorrect information contained on this site.  
Please visit <http://www.erudus.com/terms-and-conditions> for full terms and conditions.