

19618

# ROWNTREES FRUIT GUMS 10x150g

Rowntrees Fruit Gums 150g 10x150g

## PRODUCT DESCRIPTION

Fruit Gums

Brand	<a href="#">Nestle UK</a>
Manufacturer Product Code	12534332
Product Type	Food
Product Category	Confectionery
Storage Type	Ambient
Erudus ID	f276fb31649e453fb47315ee682578f8
Specification Type	Legacy

Inner Component GTIN	8445290019530
Outer Case GTIN	8445290019547



## INGREDIENTS

### Ingredient Declaration

Ingredients: glucose syrup, sugar, starch, thickener (gum arabic), acids (malic acid, citric acid, lactic acid, acetic acid), concentrated fruit juices (0.8%) (apple, blackcurrant, strawberry, orange, lemon, lime), acidity regulator (trisodium citrate), vegetable fat (palm), plant and vegetable concentrates (carrot, hibiscus), flavourings, colours (anthocyanins, copper complexes of chlorophyllins, beta-carotene, curcumin), glazing agent (carnauba wax).

## ALLERGENS

Product Contains:

Celery/Celeriac	No	Mustard	No
Cereals Containing Gluten	No	Nuts (Tree)	No
Barley	No	Almond nuts	No
Oats	No	Brazil nuts	No
Rye	No	Cashew nuts	No
Wheat (including Spelt and Khorasan)	No	Hazelnuts	No
Gluten content <20ppm	No	Macadamia (Queensland) nuts	No
Crustacea	No	Pecan nuts	No
Eggs	No	Pistachio nuts	No
Fish	No	Walnuts	No
Lupin	No	Peanuts	No
Milk	No	Sesame Seeds	No
Molluscs	No	Soybeans	No
		Sulphur Dioxide and Sulphites	No

### Additional Allergen Information

Important: Young children (less than 4 years) have limited chewing ability and could choke on small sweets

SUPPLEMENTARY  
INGREDIENT  
INFORMATION

<b>Palm Oil</b>	No
<b>Hydrogenated Vegetable Oil/Fat</b>	No
<b>GM Protein/DNA</b>	No

ADDITIVES

*Product Contains:*

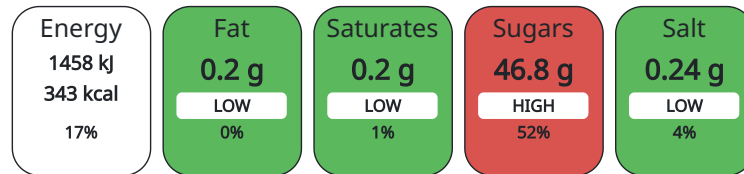
<b>Artificial Colours</b>	No	<b>Artificial Flavourings</b>	No
		<b>Artificial Preservatives</b>	No

DIET SUITABILITY

<b>Suitable for Coeliacs</b>	No	<b>Halal Diet</b>	No
<b>Kosher Diet</b>	No	<b>Vegetarian Diet</b>	Suitable for
<b>Vegan Diet</b>	No		

NUTRITIONAL  
INFORMATION

Each 100g/ml portion contains:



of your reference intake.

Typical values per 100g/ml : Energy 343kcal / 1458kj

Nutrient	per 100g/ml	RI per 100g/ml
<b>Energy (kj)</b>	1458 kj	17%
<b>Energy (kcal)</b>	343 kcal	17%
<b>Fat</b>	0.2 g	0%
of which Saturates	0.2 g	1%
<b>Carbohydrate</b>	83.1 g	32%
of which Sugars	46.8 g	52%
<b>Fibre</b>	1.5 g	
<b>Protein</b>	0.1 g	0%
<b>Salt</b>	0.24 g	4%

HANDLING &  
STORAGE  
INFORMATION

**Directions For Use**  
Ready to eat

**Storage Instructions**  
Store cool and dry

**Shelf Life from Time of Production** 365 Days

ACCREDITATIONS/  
CERTIFICATIONS/  
ASSURANCE  
SCHEMES  
ORIGIN

**FSSC 22000**

**Product Country of Origin** United Kingdom

PRODUCT  
CHARACTERISTICS

**Standards Testing**

<b>Do you undertake trend analysis of microbiological results?</b>	No	<b>Is shelf life testing undertaken?</b>	No
--	----	--	----

CONFIGURATION

<b>Case Configuration</b>	Inner Pack Configuration
<b>Total Quantity of Inner Components in Outer Case</b>	10 Units

PRODUCT WEIGHTS

Inner Component	
<b>Variable Weight Consumer Item</b>	No
<b>Inner Component Weight</b>	150 g
<b>Weight/Volume</b>	
150g net weight	
Outer Case	
<b>Outer Case Gross Weight</b>	1.65 kg
<b>Outer Case Net Weight</b>	1.5 kg

PRODUCT DIMENSIONS

Inner Component	
<b>Inner Component Depth</b>	45 mm
<b>Inner Component Width</b>	125 mm
<b>Inner Component Height</b>	168 mm
Outer Case	
<b>Outer Case Depth</b>	267 mm
<b>Outer Case Width</b>	119 mm
<b>Outer Case Height</b>	181 mm

PALLET INFORMATION

<b>Quantity of Cases Per Pallet Layer</b>	52 Cases	<b>Pallet Height</b>	1.2 MTR
<b>Quantity of Layers Per Pallet</b>	4 Layers	<b>Pallet Gross Weight</b>	309 kg
<b>Quantity of Cases Per Pallet</b>	208 Cases		

OTHER INFORMATION

**Manufacturer Comments**

Packaging weights to be confirmed. Important: Young children (less than 4 years) have limited chewing ability and could choke on small sweets

CONTACT INFORMATION

**Address**

Nestle UK  
Nestlé UK Ltd  
PO Box 207  
YO91 1WS  
York  
England

helen.brewer@uk.nestle.com  
0800 00 00 30 (UK)

**Complaints**

consumer.services@uk.nestle.com  
0800 00 00 30 (UK)

The information on the [Erudus System](#) has been supplied by the manufacturers of the products and, whilst the owners of the Erudus System take steps to ensure the information is regularly updated, they give no warranty and no guarantee that the information is accurate. Product information and ingredients may change, please always read product labels carefully in addition to using the information provided by Erudus.

We do not accept liability for any inaccuracies or incorrect information contained on this site.  
Please visit <http://www.erudus.com/terms-and-conditions> for full terms and conditions.