

Changed Sep 24, 2025 07:45

Reviewed Sep 24, 2025 07:45

Erudus ID 07b6be8db8034b96851aedc51ad886ce

Version 2.0

Status Published

19638

# San Pellegrino Lemon 12x330ml (New Can)

Sparkling Lemon Beverage With 16% Lemon Juice From Concentrate, With Sugar And Sweetener.  
12x348g

## PRODUCT DESCRIPTION

Our iconic Italian Sparkling Drinks have been crafted with quality since 1932. Our winning recipe for a top drinking experience always begins with careful selection of the highest-quality Mediterranean fruits. We have long-standing relationships with many of our partner farms, where the fruits are harvested by hand, and their juices extracted in facilities located in the same region to capture all their delicious goodness.

Brand	<a href="#">Nestle Waters UK</a>
Manufacturer Product Code	12535439
Product Type	Drink
Product Category	Juices and Cordials
Storage Type	Ambient
Erudus ID	07b6be8db8034b96851aedc51ad886ce
Specification Type	Drinks



Inner Component GTIN 8002270576829

Outer Case GTIN 8002270576812



## INGREDIENTS

### Ingredient Declaration

Water, Lemon Juice from Concentrate (16%), Sugar, Carbon Dioxide, Natural Lemon Flavouring, Natural Flavourings, Stabiliser (Pectins), Sweetener (Steviol Glycosides from Stevia), Sweetener from natural origin.

ALLERGENS

Product Contains:

Celery/Celeriac	No	Mustard	No
Cereals Containing Gluten	No	Nuts (Tree)	No
Barley	No	Almond nuts	No
Oats	No	Brazil nuts	No
Rye	No	Cashew nuts	No
Wheat (including Spelt and Khorasan)	No	Hazelnuts	No
Crustacea	No	Macadamia (Queensland) nuts	No
Eggs	No	Pecan nuts	No
Fish	No	Pistachio nuts	No
Lupin	No	Walnuts	No
Milk	No	Peanuts	No
Molluscs	No	Sesame Seeds	No
		Soybeans	No
		Sulphur Dioxide and Sulphites	No

Additional Allergen Information

No Allergens

SUPPLEMENTARY INGREDIENT INFORMATION

Palm Oil	No
Hydrogenated Vegetable Oil/Fat	No
GM Protein/DNA	No

ADDITIVES

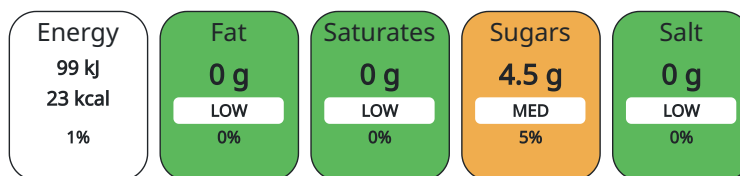
Product Contains:

DIET SUITABILITY

Vegan Diet	Suitable for	Vegetarian Diet	Suitable for
Halal Diet	No	Kosher Diet	No

NUTRITIONAL INFORMATION AS SOLD

Each 100g/ml portion contains:



of your reference intake.

Typical values per 100g/ml : Energy 23kcal / 99kJ

Nutrient	per 100ml	RI per 100ml	per 330ml serving	RI per 330ml serving
Energy (kJ)	99 kJ	1%	326.7	4%
Energy (kcal)	23 kcal	1%	75.9	4%
Fat	0 g		0 g	
of which Saturates	0 g		0 g	
Carbohydrate	5.5 g	2%	18.15 g	7%
of which Sugars	4.5 g	5%	14.85 g	17%
Fibre	0.1 g		0.33 g	
Protein	0 g		0 g	
Salt	0 g		0 g	
Serving Size	330 ml			

HANDLING &  
STORAGE  
INFORMATION

**Directions For Use**

Best served chilled.

**Storage Instructions**

Best before: see base of can. Store in a clean, cool, dry and odourless place, away from direct sunlight and freezing temperatures.

**Shelf Life from Time of Production** 456 Days

ACCREDITATIONS/  
CERTIFICATIONS/  
ASSURANCE  
SCHEMES  
ORIGIN

**FSSC 22000**

**ISO 14001 (Environmental Management)**

**Product Country of Origin** Italy

**Origin of the Primary Ingredient** Not Applicable

PRODUCT  
CHARACTERISTICS

Standards Testing

**Do you undertake trend analysis of microbiological results?** Yes

**Is shelf life testing undertaken?** Yes

CONFIGURATION

Case Configuration

Inner Pack Configuration

**Total Quantity of Inner Components in Outer Case** 12 Units

**Count per Inner Component** 12

**Is the Outer Case Splittable?** No

PRODUCT  
WEIGHTS

Inner Component

**Inner Component Weight** 348 g

Outer Case

**Outer Case Gross Weight** 4.23 kg

**Outer Case Net Weight** 4.03 kg

PRODUCT  
DIMENSIONS

Inner Component

**Inner Component Depth** 58 mm

**Inner Component Width** 58 mm

**Inner Component Height** 146 mm

Outer Case

**Outer Case Depth** 178 mm

**Outer Case Width** 240 mm

**Outer Case Height** 149 mm

PALLET  
INFORMATION

**Quantity of Cases Per Pallet Layer** 28 Cases

**Pallet Height** 1.5 MTR

**Quantity of Layers Per Pallet** 9 Layers

**Pallet Gross Weight** 1097 kg

**Quantity of Cases Per Pallet** 252 Cases

PACKAGING

Inner Component Packaging

Type	Materials	Weight	Recycled Material %	Recyclable	Returnable	Composite
Can	Aluminium	11.4 g				

Outer Case Packaging

Type	Materials	Weight	Recycled Material %	Recyclable	Returnable	Composite
Can	Plastic	25.5 g				
Can	Paper/Cardboard	0.6 g				

MARKETING  
INFORMATION

**Marketing Description**

• TASTEFULLY LIGHT NEW LOOK, SAME GREAT TASTE - Our Tastefully Light range has fresh new packaging but rest assured the flavour remains the same great taste you love. • Our Tastefully Light range is a low calorie soft drink option with less than 75 kCals without compromise on taste • Be transported to the lemon groves of Italy with San Pellegrino Lemon • San Pellegrino Lemon is a delicately balanced lemon drink with squeezed juice of lemons, clean, crisp bubbles. • Our iconic Italian Sparkling Drinks have been crafted with quality since 1932 for an unmistakable taste • The fulfilling taste of San Pellegrino Italian Soft Drinks begins with the finest Mediterranean fruits carefully selected by our experts • The filtered water in each canned drink has been chosen for its ability to bring out the full flavour of our delicious Mediterranean fruits • San Pellegrino Italian fizzy drinks turn any drinking experience into a delightful and stylish moment • San Pellegrino Soft Drinks are best served cold, either on their own or as a mixer for classic and innovative cocktails • All our canned soft drinks come in fully recyclable cans

OTHER  
INFORMATION

<b>Intrastat/Taric Code</b>	2202991911
<b>Commodity Code</b>	2202991911

CONTACT  
INFORMATION

**Address**

Nestle Waters UK  
Nestlé UK Ltd (Waters)  
Park House  
RH10 9AD  
Manor Royal  
Crawley  
England

samuel.mayes@waters.nestle.com  
07824 561354

The information on the [Erudus System](#) has been supplied by the manufacturers of the products and, whilst the owners of the Erudus System take steps to ensure the information is regularly updated, they give no warranty and no guarantee that the information is accurate. Product information and ingredients may change, please always read product labels carefully in addition to using the information provided by Erudus.

We do not accept liability for any inaccuracies or incorrect information contained on this site.  
Please visit <http://www.erudus.com/terms-and-conditions> for full terms and conditions.