

Changed Jan 20, 2023 17:22

Erudus ID bc43877cfb324c29a22cc9722586fa15

Version 1.0

Status Published

19639

San Pellegrino Blood Orange 12x330ml (New Can)

San Pellegrino Blood Orange 12x330ml (New Can)

PRODUCT DESCRIPTION

Sparkling fruit beverage with 12% Orange juice and 4% Blood Orange juice from concentrates with sugar and sweetener. An Italian tradition since 1932, SANPELLEGRINO Italian Sparkling Drinks have delighted the world with their authentic Italian taste. Allow your senses to take in the sun-ripened fruit. Its unique and intense taste make every moment special and allow you to enjoy life *deliziosa* any time you choose.

Brand	Nestle Waters UK
Manufacturer Product Code	12522081
Product Type	Drink
Product Category	Juices and Cordials
Storage Type	Ambient
Erudus ID	bc43877cfb324c29a22cc9722586fa15
Specification Type	Legacy



Inner Component GTIN	8002270586835
Outer Case GTIN	8002270586828



INGREDIENTS

Ingredient Declaration

Water, Orange Juice from Concentrate (12%), Blood Orange Juice from Concentrate (4%), Sugar, Carbon Dioxide, Natural Flavourings. Orange Extract (0.1%), Acid (Citric Acid), Black Carrot Concentrate, Stabiliser (Pectins), Sweetener (Steviol Glycosides from Stevia), Sweetener from Natural origin

ALLERGENS

Product Contains:

Celery/Celeriac	No	Mustard	No
Cereals Containing Gluten	No	Nuts (Tree)	No
Barley	No	Almond nuts	No
Oats	No	Brazil nuts	No
Rye	No	Cashew nuts	No
Wheat (including Spelt and Khorasan)	No	Hazelnuts	No
Crustacea	No	Macadamia (Queensland) nuts	No
Eggs	No	Pecan nuts	No
Fish	No	Pistachio nuts	No
Lupin	No	Walnuts	No
Milk	No	Peanuts	No
Molluscs	No	Sesame Seeds	No
		Soybeans	No
		Sulphur Dioxide and Sulphites	No

Additional Allergen Information

No Allergens

SUPPLEMENTARY INGREDIENT INFORMATION

Palm Oil	No
Hydrogenated Vegetable Oil/Fat	No
GM Protein/DNA	No

ADDITIVES

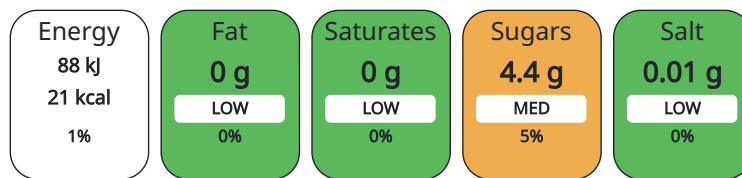
Product Contains:

DIET SUITABILITY

Suitable for Coeliacs	Yes	Halal Diet	No
Kosher Diet	No	Vegetarian Diet	Suitable for
Vegan Diet	Suitable for		

NUTRITIONAL INFORMATION

Each 100g/ml portion contains:



of your reference intake.

Typical values per 100g/ml : Energy 21kcal / 88kj

Nutrient	per 100g/ml	RI per 100g/ml	per 330g/ml serving	RI per 330g/ml serving
Energy (kJ)	88 kJ	1%	290.4	3%
Energy (kcal)	21 kcal	1%	69.3	3%
Fat	0 g		0 g	
of which Saturates	0 g		0 g	
Carbohydrate	4.5 g	2%	14.85 g	6%
of which Sugars	4.4 g	5%	14.52 g	16%
Fibre	0.1 g		0.33 g	
Protein	0.1 g	0%	0.33 g	1%
Salt	0.01 g	0%	0.03 g	1%
Serving Size		330 g		

HANDLING & STORAGE INFORMATION

Directions For Use

Best served chilled.

Storage Instructions

Best before: see base of can. Store in a clean, cool, dry and odourless place, away from direct sunlight and freezing temperatures.

Shelf Life from Time of Production 456 Days

ACCREDITATIONS/ CERTIFICATIONS/ ASSURANCE SCHEMES ORIGIN

FSSC 22000

ISO 14001 (Environmental Management)

Product Country of Origin Italy

PRODUCT CHARACTERISTICS

Standards Testing

Do you undertake trend analysis of microbiological results? Yes

Is shelf life testing undertaken? Yes

CONFIGURATION

Case Configuration

Inner Pack Configuration

Total Quantity of Inner Components in Outer Case 12 Units

Count per Inner Component 12

Is the Outer Case Splittable? No

PRODUCT WEIGHTS

Inner Component

Variable Weight Consumer Item No

Inner Component Weight 347 g

Outer Case

Outer Case Gross Weight 4.23 kg

Outer Case Net Weight 4.03 kg

PRODUCT DIMENSIONS

Inner Component

Inner Component Depth 58 mm

Inner Component Width 58 mm

Inner Component Height 146 mm

Outer Case

Outer Case Depth 178 mm

Outer Case Width 240 mm

Outer Case Height 149 mm

PALLET INFORMATION

Quantity of Cases Per Pallet Layer 28 Cases

Pallet Height 1.5 MTR

Quantity of Layers Per Pallet 9 Layers

Pallet Gross Weight 1097 kg

Quantity of Cases Per Pallet 252 Cases

PACKAGING

Inner Component Packaging

Type	Materials	Weight	Recycled Material %	Recyclable	Returnable	Composite
Can	Aluminium	11.4 g				

Outer Case Packaging

Type	Materials	Weight	Recycled Material %	Recyclable	Returnable	Composite
Can	Plastic	25.5 g				
Can	Paper/Cardboard	0.6 g				

OTHER INFORMATION

Intrastat/Taric Code 2202991911

Commodity Code 2202991911

CONTACT
INFORMATION

Address

Nestle Waters UK
Nestlé UK Ltd (Waters)
Park House
RH10 9AD
Manor Royal
Crawley
England

samuel.mayes@waters.nestle.com
07824 561354

The information on the [Erudus System](#) has been supplied by the manufacturers of the products and, whilst the owners of the Erudus System take steps to ensure the information is regularly updated, they give no warranty and no guarantee that the information is accurate. Product information and ingredients may change, please always read product labels carefully in addition to using the information provided by Erudus.

We do not accept liability for any inaccuracies or incorrect information contained on this site.
Please visit <http://www.erudus.com/terms-and-conditions> for full terms and conditions.