

Changed Dec 11, 2025 14:53

Reviewed Dec 11, 2025 14:53

Erudus ID 759c67ed173b433fb58e918ad9e05b91

Version 2.0

Status Published

19641

San Pellegrino Pomegranate & Orange 12x330ml (New Can)

Sparkling Pomegranate & Orange Beverage 12x347g

PRODUCT DESCRIPTION

SANPELLEGRINO Melograno e Arancia (Pomegranate & Orange) is a sparkling fruit beverage made with the juices of delicious oranges and pomegranate, offering a fresh, tart taste with a sweet finish. An Italian tradition since 1932, SANPELLEGRINO Italian Sparkling Drinks have delighted the world with their authentic Italian taste. Allow your senses to take in the sun-ripened fruit. Its unique and intense taste make every moment special and allow you to enjoy life deliziosa any time you choose.

Brand	Nestle Waters UK
Manufacturer Product Code	12506660
Product Type	Drink
Product Category	Juices and Cordials
Storage Type	Ambient
Erudus ID	759c67ed173b433fb58e918ad9e05b91
Specification Type	Drinks



Inner Component GTIN 8002270396885

Outer Case GTIN 8002270626821



INGREDIENTS

Ingredient Declaration

Water, Orange Juice from Concentrate (10%), Pomegranate Juice from Concentrate (6%), Sugar, Carbon Dioxide Natural Flavourings, Orange Extract (0,1%), Black Carrot Concentrate, Stabiliser: Pectins, Acid: Citric Acid, Sweetener: Steviol Glycosides*

*From Natural Origin

ALLERGENS

Product Contains:

Celery/Celeriac	No	Mustard	No
Cereals Containing Gluten	No	Nuts (Tree)	No
Barley	No	Almond nuts	No
Oats	No	Brazil nuts	No
Rye	No	Cashew nuts	No
Wheat (including Spelt and Khorasan)	No	Hazelnuts	No
Crustacea	No	Macadamia (Queensland) nuts	No
Eggs	No	Pecan nuts	No
Fish	No	Pistachio nuts	No
Lupin	No	Walnuts	No
Milk	No	Peanuts	No
Molluscs	No	Sesame Seeds	No
		Soybeans	No
		Sulphur Dioxide and Sulphites	No

Additional Allergen Information

No Allergens

SUPPLEMENTARY INGREDIENT INFORMATION

Palm Oil	No
Hydrogenated Vegetable Oil/Fat	No
GM Protein/DNA	No

ADDITIVES

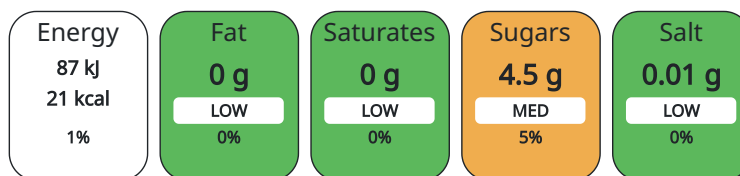
Product Contains:

DIET SUITABILITY

Vegan Diet	Suitable for	Vegetarian Diet	Suitable for
Halal Diet	Suitable for	Kosher Diet	Suitable for

NUTRITIONAL INFORMATION AS SOLD

Each 100g/ml portion contains:



of your reference intake.

Typical values per 100g/ml : Energy 21kcal / 87kJ

Nutrient	per 100ml	RI per 100ml	per 330ml serving	RI per 330ml serving
Energy (kJ)	87 kJ	1%	287.1	3%
Energy (kcal)	21 kcal	1%	69.3	3%
Fat	0 g		0 g	
of which Saturates	0 g		0 g	
Carbohydrate	4.6 g	2%	15.18 g	6%
of which Sugars	4.5 g	5%	14.85 g	17%
Fibre	0 g		0 g	
Protein	0.1 g	0%	0.33 g	1%
Salt	0.01 g	0%	0.03 g	1%
Sodium	4 mg		13.2 mg	
Serving Size		330 ml		

HANDLING &
STORAGE
INFORMATION

Directions For Use

Best served chilled.

Storage Instructions

Best before: see base of can. Store in a clean, cool, dry and odourless place, away from direct sunlight and freezing temperatures.

Shelf Life from Time of Production 456 Days

ACCREDITATIONS/
CERTIFICATIONS/
ASSURANCE
SCHEMES
ORIGIN

FSSC 22000

ISO 14001 (Environmental Management)

Product Country of Origin Italy

Origin of the Primary Ingredient Italy

PRODUCT
CHARACTERISTICS

Standards Testing

Do you undertake trend analysis of microbiological results? Yes

Is shelf life testing undertaken? Yes

CONFIGURATION

Case Configuration

Inner Pack Configuration

Total Quantity of Inner Components in Outer Case 12 Units

Count per Inner Component 12

Is the Outer Case Splittable? No

PRODUCT
WEIGHTS

Inner Component

Inner Component Weight 347 g

Outer Case

Outer Case Gross Weight 4.23 kg

Outer Case Net Weight 4.03 kg

PRODUCT
DIMENSIONS

Inner Component

Inner Component Depth 58 mm

Inner Component Width 58 mm

Inner Component Height 146 mm

Outer Case

Outer Case Depth 178 mm

Outer Case Width 240 mm

Outer Case Height 149 mm

PALLET
INFORMATION

Quantity of Cases Per Pallet Layer 28 Cases

Pallet Height 1.5 MTR

Quantity of Layers Per Pallet 9 Layers

Pallet Gross Weight 1097 kg

Quantity of Cases Per Pallet 252 Cases

PACKAGING

Inner Component Packaging

Type	Materials	Weight	Recycled Material %	Recyclable	Returnable	Composite
Can	Aluminium	11.4 g				

Outer Case Packaging

Type	Materials	Weight	Recycled Material %	Recyclable	Returnable	Composite
Can	Plastic	25.5 g				
Can	Paper/Cardboard	0.6 g				

MARKETING
INFORMATION

Marketing Description

• Our San Pellegrino Italian Sparkling Drinks range is a low calorie soft drink option with less than 75 kCals without compromise on taste • Made with the juices of orange and pomegranate, this delicious refreshing drink is just on the right side of sweet. • Our iconic Italian Sparkling Drinks have been crafted with quality since 1932 for an unmistakable taste • The fulfilling taste of San Pellegrino Italian Soft Drinks begins with the finest Mediterranean fruits carefully selected by our experts • The filtered water in each canned drink has been chosen for its ability to bring out the full flavour of our delicious Mediterranean fruits • San Pellegrino Italian fizzy drinks turn any drinking experience into a delightful and stylish moment • San Pellegrino Soft Drinks are best served cold, either on their own or as a mixer for classic and innovative cocktails • All our canned soft drinks come in fully recyclable cans

OTHER
INFORMATION

Intrastat/Taric Code	2202991911
Commodity Code	2202991911

CONTACT
INFORMATION

Address

Nestle Waters UK
Nestlé UK Ltd (Waters)
Park House
RH10 9AD
Manor Royal
Crawley
England

samuel.mayes@waters.nestle.com
07824 561354

The information on the [Erudus System](#) has been supplied by the manufacturers of the products and, whilst the owners of the Erudus System take steps to ensure the information is regularly updated, they give no warranty and no guarantee that the information is accurate. Product information and ingredients may change, please always read product labels carefully in addition to using the information provided by Erudus.

We do not accept liability for any inaccuracies or incorrect information contained on this site.
Please visit <http://www.erudus.com/terms-and-conditions> for full terms and conditions.