

Changed Dec 15, 2025 16:19

Reviewed Dec 15, 2025 16:19

Erudus ID 7d87ce419bcb4a2d84ac7b1a9cbad6cd

Version 1.1

Status Published

19673

Pot Noodle Chicken & Mushroom 90g

Pot Noodle Chicken & Mushroom Flavour 90g 12x90g

PRODUCT DESCRIPTION

Noodles in a chicken and mushroom flavour sauce with vegetables and a little sachet of soy sauce.

Brand	Unilever UK Limited
Manufacturer Product Code	69975115
Product Type	Food
Product Category	Nuts and Seeds
Storage Type	Ambient
Erudus ID	7d87ce419bcb4a2d84ac7b1a9cbad6cd
Specification Type	Generic

Inner Component GTIN 8720182695505

Outer Case GTIN 8720182695536



INGREDIENTS

Ingredient Declaration

Ingredients

Noodle mix (96%): Dried noodles (66%) [WHEAT flour (contains calcium carbonate, iron, niacin, thiamin), sunflower oil, salt, firming agents (potassium carbonates, sodium carbonates)], maltodextrin, WHEAT flour, sweetcorn, potassium chloride, flavour enhancers (monosodium glutamate, disodium inosinate, disodium guanylate), flavourings (contain MILK), sugar, skimmed MILK powder, palm fat, onion powder¹, salt, yeast extract, yeast powder (contains WHEAT, BARLEY), mushrooms (0.3%), herbs (chives¹, sage¹), potato starch, mushroom juice concentrate (maltodextrin, mushroom juice concentrate), acid (citric acid). Sauce sachet (4%): Soy sauce [water, SOY, salt, molasses, sugar, WHEAT flour, acid (acetic acid)].

Ingredient Statements

May contain other cereals containing gluten, egg, celery and mustard. ¹From sustainable agriculture

ALLERGENS

Product Contains:

Celery/Celeriac	May Contain
Cereals Containing Gluten	Yes
Barley	Yes
Oats	No
Rye	No
Wheat (including Spelt and Khorasan)	Yes
Crustacea	No
Eggs	May Contain
Fish	No
Lupin	No
Milk	Yes
Molluscs	No

Mustard	May Contain
Nuts (Tree)	No
Almond nuts	No
Brazil nuts	No
Cashew nuts	No
Hazelnuts	No
Macadamia (Queensland) nuts	No
Pecan nuts	No
Pistachio nuts	No
Walnuts	No
Peanuts	No
Sesame Seeds	No
Soybeans	Yes
Sulphur Dioxide and Sulphites	No

Risk Source:

Additional Allergen Information

May contain celery, egg, and mustard

SUPPLEMENTARY INGREDIENT INFORMATION

Palm Oil	Yes
Hydrogenated Vegetable Oil/Fat	No
GM Protein/DNA	No

ADDITIVES

Product Contains:

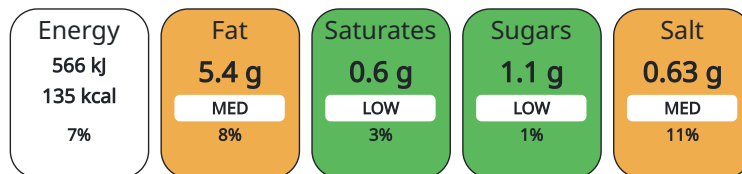
Artificial Antioxidants	No	Artificial Flavourings	Yes
Artificial Colours	No	Artificial Preservatives	No
Artificial Flavour Enhancers	Yes	Artificial Sweeteners	No

DIET SUITABILITY

Vegan Diet	No	Vegetarian Diet	Suitable for
Halal Diet	No	Kosher Diet	No

NUTRITIONAL INFORMATION AS SOLD

Each 100g/ml portion contains:



of your reference intake.

Typical values per 100g/ml : Energy 135kcal / 566kJ

Nutrient	per 100g	RI per 100g	per 90g serving	RI per 90g serving
Energy (kj)	566 kj	7%	509.4	6%
Energy (kcal)	135 kcal	7%	121.5	6%
Fat	5.4 g	8%	4.86 g	7%
of which Saturates	0.6 g	3%	0.54 g	3%
Carbohydrate	18 g	7%	16.2 g	6%
of which Sugars	1.1 g	1%	0.99 g	1%
Fibre	0.6 g		0.54 g	
Protein	3 g	6%	2.7 g	5%
Salt	0.63 g	11%	0.57 g	10%
Sodium	270 mg		243 mg	

Serving Size 90 g

Source of Nutritional Information Calculation based on known values of ingredients

Directions For Use

Instructions for Use 1. Peel back lid halfway, remove sachet, pour boiling water to fill line, re-cover pot with lid & leave for 2 mins
2. Stir in sachet contents, leave for another 2 mins while you check out @POTNOODLE 3. Seize your opportunity! Strike while the pot's hot! Do not reheat!

Storage Instructions

Store in a cool, dry place

Shelf Life from Time of Production 270 Days

FSSC 22000

School Approved (The Requirement for School Food Regulation 2014)

Roundtable of Sustainable Palm Oil (RSPO)

Other Accreditation

HANDLING & STORAGE INFORMATION

ACCREDITATIONS/ CERTIFICATIONS/ ASSURANCE SCHEMES

ORIGIN

Product Country of Origin United Kingdom

Additional Origin Details

SU - Crumlin

Origin of the Primary Ingredient United Kingdom

PRODUCT CHARACTERISTICS CONFIGURATION

Standards Testing

Case Configuration

Inner Pack Configuration

Total Quantity of Inner Components in 12 Units

Outer Case

Is the Outer Case Splittable? Yes

PRODUCT WEIGHTS

Inner Component

Variable Weight Consumer Item No

Inner Component Weight 90 g

Outer Case

Outer Case Gross Weight 1.53 kg

Outer Case Net Weight 1.08 kg

PRODUCT DIMENSIONS

Inner Component	
Inner Component Depth	98 mm
Inner Component Width	98 mm
Inner Component Height	110 mm
Outer Case	
Outer Case Depth	393 mm
Outer Case Width	299 mm
Outer Case Height	115 mm

PALLET INFORMATION

Quantity of Cases Per Pallet Layer	10 Cases	Pallet Height	1.3 MTR
Quantity of Layers Per Pallet	10 Layers	Pallet Gross Weight	183.5 kg
Quantity of Cases Per Pallet	100 Cases		

PACKAGING

Inner Component Packaging						
Type	Materials	Weight	Recycled Material %	Recyclable	Returnable	Composite
Pot	Plastic	19.5 g				
Pot	Aluminium	0.89 g				

MARKETING INFORMATION

Marketing Description

Pot Noodles in a delicious Chicken and Mushroom flavour sauce with vegetables and a little sachet of soy sauce for that extra boost in taste.

OTHER INFORMATION

Manufacturer Comments

n/a

CONTACT INFORMATION

Address

Unilever UK Limited
Lever House
3 St James Road
KT1 2BA
Kingston Upon Thames
England

Bihter.Pamay@unilever.com
020 8547 8989

Technical

Theresa Crayston
Theresa.Crayston@unilever.com
07825008860
R&D Assistant Deploy Manager UFS

Commercial

Iwan Phillips
Iwan.Phillips@unilever.com
+44 7795 645460
Route to Market, Away From Home

Complaints

via the Careline - details on pack
0800 783 3728

The information on the [Erudus System](#) has been supplied by the manufacturers of the products and, whilst the owners of the Erudus System take steps to ensure the information is regularly updated, they give no warranty and no guarantee that the information is accurate. Product information and ingredients may change, please always read product labels carefully in addition to using the information provided by Erudus.

We do not accept liability for any inaccuracies or incorrect information contained on this site.
Please visit <http://www.erudus.com/terms-and-conditions> for full terms and conditions.