

19690

# San Pellegrino Orange 12x330ml (New Can)

San Pellegrino Orange 12x330ml 12x347g

## PRODUCT DESCRIPTION

San Pellegrino Aranciata (Orange) is characterised by the wonderful citrusy finish and intense aromas of juice from sun-ripened oranges. It's a unique Italian treat inspired by homemade Aranciata: a refreshing sparkling orange drink.

Brand	<a href="#">Nestle Waters UK</a>
Manufacturer Product Code	12503636
Product Type	Drink
Product Category	Juices and Cordials
Storage Type	Ambient
Erudus ID	c9d9dc64a9654eb384e7a92c0bdf24a8
Specification Type	Legacy



Inner Component GTIN	8002270506833
Outer Case GTIN	8002270506826



## INGREDIENTS

### Ingredient Declaration

Water, Orange Juice from Concentrate (16%), Sugar, Carbon Dioxide, Orange Extract (0,1%), Acid: Citric Acid. Natural Flavourings, Stabiliser: Pectins. Natural Orange Flavouring, Sweetener: Steviol Glycosides From Stevia, Sweetener from Natural Origin.

## ALLERGENS

Product Contains:

Celery/Celeriac	No	Mustard	No
Cereals Containing Gluten	No	Nuts (Tree)	No
Barley	No	Almond nuts	No
Oats	No	Brazil nuts	No
Rye	No	Cashew nuts	No
Wheat (including Spelt and Khorasan)	No	Hazelnuts	No
Crustacea	No	Macadamia (Queensland) nuts	No
Eggs	No	Pecan nuts	No
Fish	No	Pistachio nuts	No
Lupin	No	Walnuts	No
Milk	No	Peanuts	No
Molluscs	No	Sesame Seeds	No
		Soybeans	No
		Sulphur Dioxide and Sulphites	No

**Additional Allergen Information**

No Allergens

**SUPPLEMENTARY  
INGREDIENT  
INFORMATION**

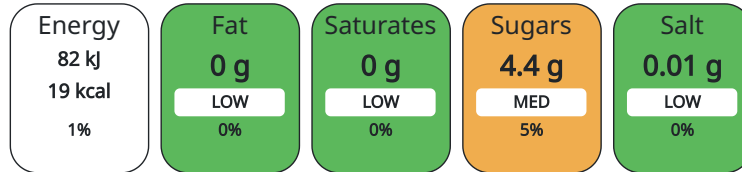
<b>Palm Oil</b>	No
<b>Hydrogenated Vegetable Oil/Fat</b>	No
<b>GM Protein/DNA</b>	No

**ADDITIVES***Product Contains:***DIET SUITABILITY**

<b>Suitable for Coeliacs</b>	Yes	<b>Halal Diet</b>	No
<b>Kosher Diet</b>	No	<b>Vegetarian Diet</b>	Suitable for
<b>Vegan Diet</b>	Suitable for		

**NUTRITIONAL  
INFORMATION**

Each 100g/ml portion contains:



of your reference intake.

Typical values per 100g/ml : Energy 19kcal / 82kj

Nutrient	per 100g/ml	RI per 100g/ml	per 330g/ml serving	RI per 330g/ml serving
<b>Energy (kJ)</b>	82 kJ	1%	270.6	3%
<b>Energy (kcal)</b>	19 kcal	1%	62.7	3%
<b>Fat</b>	0 g		0 g	
of which Saturates	0 g		0 g	
<b>Carbohydrate</b>	4.4 g	2%	14.52 g	6%
of which Sugars	4.4 g	5%	14.52 g	16%
<b>Fibre</b>	0.1 g		0.33 g	
<b>Protein</b>	0.1 g	0%	0.33 g	1%
<b>Salt</b>	0.01 g	0%	0.03 g	1%

**Serving Size** 330 g**HANDLING &  
STORAGE  
INFORMATION****Directions For Use**

Best served chilled.

**Storage Instructions**

Best before: see base of can. Store in a clean, cool, dry and odourless place, away from direct sunlight and freezing temperatures.

**Shelf Life from Time of Production** 456 Days**ACCREDITATIONS/  
CERTIFICATIONS/  
ASSURANCE  
SCHEMES  
ORIGIN****FSSC 22000** **ISO 14001 (Environmental Management)****Product Country of Origin** Italy**PRODUCT  
CHARACTERISTICS****Standards Testing**

<b>Do you undertake trend analysis of microbiological results?</b>	Yes	<b>Is shelf life testing undertaken?</b>	Yes
--	-----	--	-----

CONFIGURATION	Case Configuration			Inner Pack Configuration			
	<b>Total Quantity of Inner Components in Outer Case</b>	12 Units		<b>Count per Inner Component</b>	12		
	<b>Is the Outer Case Splittable?</b>	No					
PRODUCT WEIGHTS	Inner Component						
	<b>Variable Weight Consumer Item</b>	No					
	<b>Inner Component Weight</b>	347 g					
	Outer Case						
	<b>Outer Case Gross Weight</b>	4.23 kg					
	<b>Outer Case Net Weight</b>	4.03 kg					
PRODUCT DIMENSIONS	Inner Component						
	<b>Inner Component Depth</b>	58 mm					
	<b>Inner Component Width</b>	58 mm					
	<b>Inner Component Height</b>	146 mm					
	Outer Case						
	<b>Outer Case Depth</b>	178 mm					
	<b>Outer Case Width</b>	240 mm					
	<b>Outer Case Height</b>	149 mm					
	PALLET INFORMATION	<b>Quantity of Cases Per Pallet Layer</b>	28 Cases		<b>Pallet Height</b>	1.5 MTR	
<b>Quantity of Layers Per Pallet</b>		9 Layers		<b>Pallet Gross Weight</b>	1097 kg		
<b>Quantity of Cases Per Pallet</b>		252 Cases					
PACKAGING	Inner Component Packaging						
	<b>Type</b>	<b>Materials</b>	<b>Weight</b>	<b>Recycled Material %</b>	<b>Recyclable</b>	<b>Returnable</b>	<b>Composite</b>
	Can	Aluminium	11.4 g				
	Outer Case Packaging						
	<b>Type</b>	<b>Materials</b>	<b>Weight</b>	<b>Recycled Material %</b>	<b>Recyclable</b>	<b>Returnable</b>	<b>Composite</b>
	Can	Plastic	25.5 g				
	Can	Paper/Cardboard	0.6 g				
	OTHER INFORMATION	<b>Intrastat/Taric Code</b>	2202991911				
		<b>Commodity Code</b>	2202991911				
CONTACT INFORMATION	<b>Address</b>						
	Nestle Waters UK						
	Nestlé UK Ltd (Waters)						
	Park House						
	RH10 9AD						
	Manor Royal						
	Crawley England						
samuel.mayes@waters.nestle.com							
07824 561354							

The information on the [Erudus System](#) has been supplied by the manufacturers of the products and, whilst the owners of the Erudus System take steps to ensure the information is regularly updated, they give no warranty and no guarantee that the information is accurate. Product information and ingredients may change, please always read product labels carefully in addition to using the information provided by Erudus.

We do not accept liability for any inaccuracies or incorrect information contained on this site.  
Please visit <http://www.erudus.com/terms-and-conditions> for full terms and conditions.