

Changed Jan 14, 2025 19:35

Reviewed Jan 14, 2025 19:35

Erudus ID f792bf4c99a34ee4b35759b6a500cb78

Version 1.0

Status Published

19696

Red Bull Energy Drink Sugar Free 250ml 24 Pack PM 1.60

Red Bull Energy Drink Sugar Free 12x272g

PRODUCT DESCRIPTION

Red Bull Energy Drink's special formula contains ingredients of high quality: Caffeine, Taurine, B-Group Vitamins, Sugars, Water. One 250ml can of Red Bull Energy Drink contains 80 mg of caffeine, about the same amount as in a cup of home-brewed coffee. The amount of sugars in a can of Red Bull Energy Drink is comparable to the level of sugars in an equivalent amount of apple or orange juice - 11 g per 100 ml. Red Bull cans are made of 100% recyclable aluminium. Case of 12 x 250ml Red Bull Energy Drink Winter Edition Ruby Spiced Pear PMP cans. Vitalizes Body and Mind.®

Brand	Red Bull
Manufacturer Product Code	09002490280277
Product Type	Drink
Product Category	Drinks - General
Storage Type	Ambient
Erudus ID	f792bf4c99a34ee4b35759b6a500cb78
Specification Type	Drinks

Inner Component GTIN	90457982
Inner Pack GTIN	90456923
Outer Case GTIN	09002490280277



INGREDIENTS

Ingredient Declaration

Water, Sucrose, Glucose, Acid (Citric Acid), Carbon Dioxide, Taurine (0.4%), Acidity Regulator (Sodium Citrates), Caffeine (0.03%), Vitamins (Niacin, Pantothenic Acid, B6, B12), Flavourings, Colours (Plain Caramel, Riboflavins).

ALLERGENS

Product Contains:

Celery/Celeriac	No	Mustard	No
Cereals Containing Gluten	No	Nuts (Tree)	No
Barley	No	Almond nuts	No
Oats	No	Brazil nuts	No
Rye	No	Cashew nuts	No
Wheat (including Spelt and Khorasan)	No	Hazelnuts	No
Crustacea	No	Macadamia (Queensland) nuts	No
Eggs	No	Pecan nuts	No
Fish	No	Pistachio nuts	No
Lupin	No	Walnuts	No
Milk	No	Peanuts	No
Molluscs	No	Sesame Seeds	No
		Soybeans	No
		Sulphur Dioxide and Sulphites	No

SUPPLEMENTARY INGREDIENT INFORMATION ADDITIVES

GM Protein/DNA	No
----------------	----

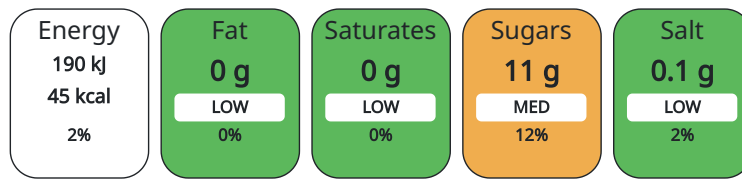
Product Contains:

DIET SUITABILITY

Vegan Diet	Suitable for	Vegetarian Diet	Suitable for
Halal Diet	Suitable for	Kosher Diet	Suitable for

NUTRITIONAL INFORMATION AS SOLD

Each 100g/ml portion contains:



of your reference intake.

Typical values per 100g/ml : Energy 45kcal / 190kJ

Nutrient	per 100ml	RI per 100ml	per 250ml serving	RI per 250ml serving
Energy (kJ)	190 kJ	2%	475	6%
Energy (kcal)	45 kcal	2%	112.5	6%
Fat	0 g		0 g	
of which Saturates	0 g		0 g	
Carbohydrate	11 g	4%	27.5 g	11%
of which Sugars	11 g	12%	27.5 g	31%
Protein	0 g		0 g	
Salt	0.1 g	2%	0.25 g	4%

Serving Size	250 ml
--------------	--------

HANDLING & STORAGE INFORMATION

Directions For Use

Can be kept ambient, best served chilled

Storage Instructions

Can be kept ambient, best served chilled

Shelf Life from Time of Production	365 Days
------------------------------------	----------

ORIGIN	Product Country of Origin		United Kingdom					
	Origin of the Primary Ingredient							
PRODUCT CHARACTERISTICS	Standards Testing							
	Do you undertake trend analysis of microbiological results?		No		Is shelf life testing undertaken?		No	
CONFIGURATION	Case Configuration			Inner Pack Configuration				
	Total Quantity of Inner Components in Outer Case		12 Units					
PRODUCT WEIGHTS	Inner Component							
	Inner Component Weight		272 g					
	Outer Case							
	Outer Case Gross Weight		3.3 kg					
PRODUCT DIMENSIONS	Outer Case Net Weight							
	3.3 kg							
	Inner Component							
	Inner Component Depth		53 mm					
	Inner Component Width		53 mm					
	Inner Component Height		134 mm					
	Outer Case							
	Outer Case Depth		213 mm					
Outer Case Width		160 mm						
Outer Case Height		136 mm						
PALLET INFORMATION	Quantity of Cases Per Pallet Layer		32 Cases		Pallet Height		1.38 MTR	
	Quantity of Layers Per Pallet		9 Layers		Pallet Gross Weight		987 kg	
	Quantity of Cases Per Pallet		288 Cases					
PACKAGING	Inner Component Packaging							
	Type	Materials	Weight	Recycled Material %	Recyclable	Returnable	Composite	
	Can	Aluminium	10.7 g					
	Outer Case Packaging							
	Type	Materials	Weight	Recycled Material %	Recyclable	Returnable	Composite	
	Case	Plastic	9 g	30.00 %				
	Case	Paper/Cardboard	31 g					
	OTHER INFORMATION CONTACT INFORMATION	Address						
		Red Bull						
		42 Earlham St, Seven Dials						
Covent Garden								
WC2H 9LA								
London								
London								
United Kingdom								
sydney.bron@redbull.com								
07890275361								

The information on the [Erudus System](#) has been supplied by the manufacturers of the products and, whilst the owners of the Erudus System take steps to ensure the information is regularly updated, they give no warranty and no guarantee that the information is accurate. Product information and ingredients may change, please always read product labels carefully in addition to using the information provided by Erudus.

We do not accept liability for any inaccuracies or incorrect information contained on this site.
Please visit <http://www.erudus.com/terms-and-conditions> for full terms and conditions.