

19698

# Monster Energy Juiced Khaotic 500ml x12

Monster Energy Juiced Khaotic 12x0.53kg

## PRODUCT DESCRIPTION

Monster Energy Juiced Khaotic 500ml x12 Can

Brand	<a href="#">Coca-Cola</a>
Manufacturer Product Code	284303
Product Type	Drink
Product Category	Drinks - General
Storage Type	Ambient
Erudus ID	837e2ce223af455d9a400f20fd3f5c7d
Specification Type	Legacy



Outer Case GTIN 5060896622514



## INGREDIENTS

### Ingredient Declaration

Carbonated Water, Sucrose, Juices from Concentrate (10%) (Apple, Orange, Peach, Tangerine, White Grape, Pineapple), Glucose Syrup, Flavourings, Taurine (0.4%), Acids (Citric Acid, Malic Acid), Acidity Regulators (Sodium Citrates, Potassium Citrates), Panax Ginseng Root Extract (0.08%), Preservative (Potassium Sorbate), Caffeine (0.03%), Sweeteners (Sucralose, Steviol Glycosides), Vitamins (B3, B6, B2, B12), Colours (Carotenes, Anthocyanins), L-Carnitine L-Tartrate (0.004%), Inositol.

## ALLERGENS

### Product Contains:

Celery/Celery	No	Mustard	No
Cereals Containing Gluten	No	Nuts (Tree)	No
Barley	No	Almond nuts	No
Oats	No	Brazil nuts	No
Rye	No	Cashew nuts	No
Wheat (including Spelt and Khorasan)	No	Hazelnuts	No
Crustacea	No	Macadamia (Queensland) nuts	No
Eggs	No	Pecan nuts	No
Fish	No	Pistachio nuts	No
Lupin	No	Walnuts	No
Milk	No	Peanuts	No
Molluscs	No	Sesame Seeds	No
		Soybeans	No
		Sulphur Dioxide and Sulphites	No

## SUPPLEMENTARY INGREDIENT INFORMATION

Palm Oil	No
Hydrogenated Vegetable Oil/Fat	No
GM Protein/DNA	No

**ADDITIVES**

*Product Contains:*

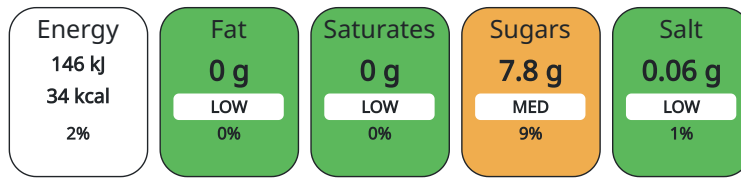
<b>Artificial Antioxidants</b>	No	<b>Artificial Flavourings</b>	Yes
<b>Artificial Colours</b>	No	<b>Artificial Preservatives</b>	No
<b>Artificial Flavour Enhancers</b>	No	<b>Artificial Sweeteners</b>	No

**DIET SUITABILITY**

<b>Suitable for Coeliacs</b>	Yes	<b>Halal Diet</b>	Suitable for
<b>Kosher Diet</b>	Suitable for	<b>Vegetarian Diet</b>	Suitable for
<b>Vegan Diet</b>	Suitable for		

**NUTRITIONAL INFORMATION**

Each 100g/ml portion contains:



of your reference intake.

Typical values per 100g/ml : Energy 34kcal / 146kJ

Nutrient	per 100g/ml	RI per 100g/ml
Energy (kJ)	146 kJ	2%
Energy (kcal)	34 kcal	2%
Fat	0 g	
of which Saturates	0 g	
Carbohydrate	8.6 g	3%
of which Sugars	7.8 g	9%
Protein	0 g	
Salt	0.06 g	1%

**HANDLING & STORAGE INFORMATION**

**Directions For Use**

Best served chilled.

**Storage Instructions**

Store on a cool dry place.

**Shelf Life from Time of Production** 720 Days

**ORIGIN**

**Product Country of Origin** Great Britain

**PRODUCT CHARACTERISTICS CONFIGURATION**

Standards Testing

Case Configuration

Inner Pack Configuration

**Total Quantity of Inner Components in** 12 Units

**Outer Case**

**Is the Outer Case Splittable?** No

**PRODUCT WEIGHTS**

Inner Component

**Variable Weight Consumer Item** No

**Inner Component Weight** 0.53 kg

Outer Case

**Outer Case Gross Weight** 6.49 kg

**Outer Case Net Weight** 6.2 kg

PRODUCT DIMENSIONS

Inner Component	
Inner Component Depth	67 mm
Inner Component Width	67 mm
Inner Component Height	168 mm
Outer Case	
Outer Case Depth	271 mm
Outer Case Width	205 mm
Outer Case Height	171 mm

PALLET INFORMATION

Quantity of Cases Per Pallet Layer	22 Cases	Pallet Height	1.53 MTR
Quantity of Layers Per Pallet	8 Layers	Pallet Gross Weight	1171.69 kg
Quantity of Cases Per Pallet	176 Cases		

PACKAGING

Inner Component Packaging						
Type	Materials	Weight	Recycled Material %	Recyclable	Returnable	Composite
Can	Aluminium	16.1 g				
Outer Case Packaging						
Type	Materials	Weight	Recycled Material %	Recyclable	Returnable	Composite
Case	Plastic	17.5 g				
Case	Paper/Cardboard	55.44 g				

OTHER INFORMATION CONTACT INFORMATION

<p><b>Address</b></p> <p>Coca-Cola  Coca-Cola Europacific Partners Great Britain Limited  Pemberton House, Bakers Road  UB8 1EZ  Uxbridge  United Kingdom</p> <p>contact@ccep.com  08081000000</p>	<p><b>Technical</b></p> <p>Data Queries  npidataexchange@ccep.com</p>
--	---

The information on the [Erudus System](#) has been supplied by the manufacturers of the products and, whilst the owners of the Erudus System take steps to ensure the information is regularly updated, they give no warranty and no guarantee that the information is accurate. Product information and ingredients may change, please always read product labels carefully in addition to using the information provided by Erudus.

We do not accept liability for any inaccuracies or incorrect information contained on this site. Please visit <http://www.erudus.com/terms-and-conditions> for full terms and conditions.