

19761

# PMP Pot Noodle Original Curry 90g

Pmp Pot Noodle Original Curry 12x90g

## PRODUCT DESCRIPTION

Noodles in an Original Curry flavour sauce with vegetables and a little sachet of Sweet Mango Chutney.

Brand	<a href="#">Unilever UK Limited</a>
Manufacturer Product Code	67492346
Product Type	Food
Product Category	Pasta, Rice and Noodles
Storage Type	Ambient
Erudus ID	0d058984973f481f9d97e657b720f19a
Specification Type	Legacy

Inner Component GTIN	8714100076620
Outer Case GTIN	8714100438510



## INGREDIENTS

### Ingredient Declaration

Ingredients (as sold): Noodle mix (96%): Dried noodles (64%) [**WHEAT** flour (contains calcium carbonate, iron, niacin, thiamin), palm oil, salt, firming agents (potassium carbonate, sodium carbonates)], maltodextrin, **WHEAT** flour, sugar, glucose syrup, carrots†, peas†, acidity regulator (sodium acetates), onion powder†, palm fat, flavour enhancer (monosodium glutamate), curry (0.5%) (cumin, coriander, turmeric, fenugreek seed, bay leaves, cloves, black pepper, cinnamon, chilli, fennel seed), flavourings, salt, yeast extract, potato starch, potassium chloride, garlic†, cheese powder (**MILK**).

Sauce Sachet (4%): Mango sauce [mango puree (88%) (mango, sugar, salt, acid (acetic acid), spices), water, spirit vinegar, modified corn starch, cayenne pepper].

†From sustainable agriculture.

## ALLERGENS

### Product Contains:

Product Contains:	May Contain	Product Contains:	May Contain
<b>Celery/Celery</b>	May Contain	<b>Mustard</b>	May Contain
<b>Cereals Containing Gluten</b>	Yes	<b>Nuts (Tree)</b>	No
Barley	No	Almond nuts	No
Oats	No	Brazil nuts	No
Rye	No	Cashew nuts	No
<b>Wheat (including Spelt and Khorasan)</b>	Yes	Hazelnuts	No
Gluten content <20ppm	No	Macadamia (Queensland) nuts	No
<b>Crustacea</b>	No	Pecan nuts	No
<b>Eggs</b>	May Contain	Pistachio nuts	No
Fish	No	Walnuts	No
Lupin	No	Peanuts	No
<b>Milk</b>	Yes	Sesame Seeds	No
<b>Molluscs</b>	No	Soybeans	May Contain
		Sulphur Dioxide and Sulphites	No

Risk Source:

**Additional Allergen Information**

May contain egg, soy, celery and mustard.

**SUPPLEMENTARY  
INGREDIENT  
INFORMATION**

<b>Palm Oil</b>	Yes
<b>Hydrogenated Vegetable Oil/Fat</b>	No
<b>GM Protein/DNA</b>	No

**ADDITIVES**

*Product Contains:*

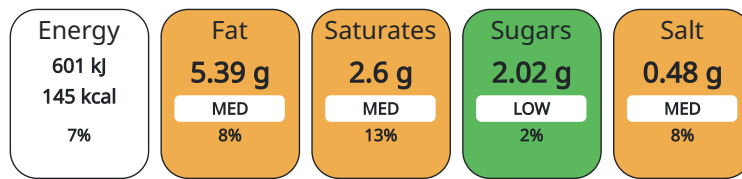
<b>Artificial Antioxidants</b>	No	<b>Artificial Flavourings</b>	Yes
<b>Artificial Colours</b>	No	<b>Artificial Preservatives</b>	No
<b>Artificial Flavour Enhancers</b>	Yes	<b>Artificial Sweeteners</b>	No

**DIET SUITABILITY**

<b>Suitable for Coeliacs</b>	No	<b>Halal Diet</b>	No
<b>Kosher Diet</b>	No	<b>Vegetarian Diet</b>	Suitable for
<b>Vegan Diet</b>	No		

**NUTRITIONAL  
INFORMATION**

Each 100g/ml portion contains:



of your reference intake.

Typical values per 100g/ml : Energy 145kcal / 601kJ

Nutrient	per 100g/ml	RI per 100g/ml	per 305g/ml serving	RI per 305g/ml serving
<b>Energy (kJ)</b>	601 kJ	7%	1833.05	22%
<b>Energy (kcal)</b>	145 kcal	7%	442.25	22%
<b>Fat</b>	5.39 g	8%	16.44 g	23%
<b>of which Saturates</b>	2.6 g	13%	7.93 g	40%
<b>Carbohydrate</b>	20.58 g	8%	62.77 g	24%
<b>of which Sugars</b>	2.02 g	2%	6.16 g	7%
<b>Fibre</b>	1.2 g		3.66 g	
<b>Protein</b>	2.77 g	6%	8.45 g	17%
<b>Salt</b>	0.48 g	8%	1.46 g	24%

<b>Serving Size</b>	305 g
---------------------	-------

**HANDLING &  
STORAGE  
INFORMATION**

**Directions For Use**

Instructions for Use 1. Peel back lid halfway, remove sachet, pour boiling water to fill line, re-cover pot with lid & leave for 2 mins  
2. Stir in sachet contents, leave for another 2 mins while you check out @POTNOODLE 3. Seize your opportunity! Strike while the pot's hot! Do not reheat!

**Storage Instructions**

Store in a cool, dry place

<b>Shelf Life from Time of Production</b>	270 Days
---	----------

**ACCREDITATIONS/  
CERTIFICATIONS/  
ASSURANCE  
SCHEMES  
ORIGIN**

<b>FSSC 22000</b>	<b>Roundtable of Sustainable Palm Oil (RSPO)</b>
-------------------	--

<b>Product Country of Origin</b>	Great Britain
----------------------------------	---------------

PRODUCT CHARACTERISTICS	Standards Testing			
	Do you undertake trend analysis of microbiological results?	No	Is shelf life testing undertaken?	No
CONFIGURATION	Case Configuration		Inner Pack Configuration	
	Total Quantity of Inner Components in Outer Case	12 Units		
	Is the Outer Case Splittable?	No		
PRODUCT WEIGHTS	Inner Component			
	Variable Weight Consumer Item	No		
	Inner Component Weight	90 g		
	Weight/Volume			
	90g			
	Outer Case			
	Outer Case Gross Weight	1.54 kg		
Outer Case Net Weight	1.08 kg			
PRODUCT DIMENSIONS	Inner Component			
	Inner Component Depth	98 mm		
	Inner Component Width	98 mm		
	Inner Component Height	110 mm		
	Outer Case			
	Outer Case Depth	393 mm		
	Outer Case Width	299 mm		
	Outer Case Height	115 mm		
PALLET INFORMATION	Quantity of Cases Per Pallet Layer	10 Cases	Pallet Height	1.31 MTR
	Quantity of Layers Per Pallet	10 Layers	Pallet Gross Weight	183.5 kg
	Quantity of Cases Per Pallet	100 Cases		
OTHER INFORMATION	Manufacturer Comments			
	N/A			
CONTACT INFORMATION	Address		Technical	
	Unilever UK Limited Lever House 3 St James Road KT1 2BA Kingston Upon Thames England  Bihter.Pamay@unilever.com 020 8547 8989		Theresa Crayston Theresa.Crayston@unilever.com 07825008860 R&D Assistant Deploy Manager UFS  Commercial Iwan Phillips Iwan.Phillips@unilever.com +44 7795 645460 Route to Market, Away From Home  Complaints via the Careline - details on pack 0800 783 3728	

The information on the [Erudus System](#) has been supplied by the manufacturers of the products and, whilst the owners of the Erudus System take steps to ensure the information is regularly updated, they give no warranty and no guarantee that the information is accurate. Product information and ingredients may change, please always read product labels carefully in addition to using the information provided by Erudus.

We do not accept liability for any inaccuracies or incorrect information contained on this site.  
Please visit <http://www.erudus.com/terms-and-conditions> for full terms and conditions.