

Changed Oct 09, 2024 12:28

Reviewed Oct 09, 2024 12:28

Erudus ID 771c45c7b90d4d91810812c6269a48b2

Version 2.0

Status Published

19762

Pot Noodle Beef & Tomato 90g

Beef & Tomato Instant Noodles 12x90g

PRODUCT DESCRIPTION

Noodles in a Beef and Tomato flavour sauce with vegetables and a little sachet of Tomato Sauce.

Brand	Unilever UK Limited
Manufacturer Product Code	67492348
Product Type	Food
Product Category	Nuts and Seeds
Storage Type	Ambient
Erudus ID	771c45c7b90d4d91810812c6269a48b2
Specification Type	Generic

Inner Component GTIN 5000118203497

Outer Case GTIN 5000118203398



INGREDIENTS

Ingredient Declaration

Ingredients (as sold): Noodle mix (95%): Dried noodles (70%) [WHEAT flour (contains calcium carbonate, iron, niacin, thiamin), palm oil, salt, firming agents (potassium carbonate, sodium carbonates)], maltodextrin, WHEAT flour, yeast extract, flavour enhancers (monosodium glutamate, disodium inosinate, disodium guanylate), tomatoes† (1.2%), sugar, peas†, tomato powder† (0.8%), salt, flavourings, palm fat, hydrolysed vegetable protein (SOY), onion powder†, potato starch, acid (citric acid), garlic†, soy sauce (SOYBEANS, WHEAT), sunflower oil.

Sauce sachet (5%): Tomato sauce [water, spirit vinegar, tomato paste† (18%), sugar, glucose syrup, salt, modified corn starch].

†From sustainable agriculture .

ALLERGENS

Product Contains:

Product Contains:			
Celery/Celeriac	May Contain	Mustard	May Contain
Cereals Containing Gluten	Yes	Nuts (Tree)	No
Barley	No	Almond nuts	No
Oats	No	Brazil nuts	No
Rye	No	Cashew nuts	No
Wheat (including Spelt and Khorasan)	Yes	Hazelnuts	No
Crustacea	No	Macadamia (Queensland) nuts	No
Eggs	May Contain	Pecan nuts	No
Fish	No	Pistachio nuts	No
Lupin	No	Walnuts	No
Milk	May Contain	Peanuts	No
Molluscs	No	Sesame Seeds	No
		Soybeans	Yes
		Sulphur Dioxide and Sulphites	No

Risk Source:

Additional Allergen Information

May contain celery, egg, milk and mustard

**SUPPLEMENTARY
INGREDIENT
INFORMATION**

Palm Oil	Yes
Hydrogenated Vegetable Oil/Fat	No
GM Protein/DNA	No

ADDITIVES

Product Contains:

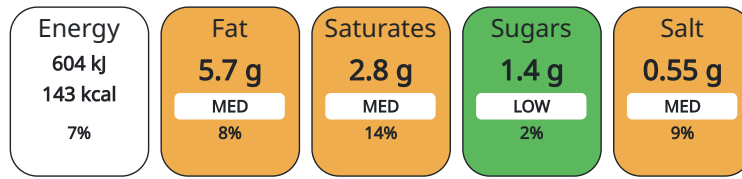
Artificial Antioxidants	No	Artificial Flavourings	Yes
Artificial Colours	No	Artificial Preservatives	No
Artificial Flavour Enhancers	Yes	Artificial Sweeteners	No

DIET SUITABILITY

Vegan Diet	No	Vegetarian Diet	Suitable for
Halal Diet	No	Kosher Diet	No

**NUTRITIONAL
INFORMATION AS
SOLD**

Each 100g/ml portion contains:



of your reference intake.

Typical values per 100g/ml : Energy 143kcal / 604kj

Nutrient	per 100g	RI per 100g	per 305g serving	RI per 305g serving
Energy (kJ)	604 kJ	7%	1842.2	22%
Energy (kcal)	143 kcal	7%	436.15	22%
Fat	5.7 g	8%	17.39 g	25%
of which Saturates	2.8 g	14%	8.54 g	43%
Carbohydrate	19 g	7%	57.95 g	22%
of which Sugars	1.4 g	2%	4.27 g	5%
Fibre	1.3 g		3.97 g	
Protein	3.5 g	7%	10.68 g	21%
Salt	0.55 g	9%	1.68 g	28%

Serving Size 305 g

**HANDLING &
STORAGE
INFORMATION**

Directions For Use

Instructions for Use 1. Peel back lid halfway, remove sachet, pour boiling water to fill line, re-cover pot with lid & leave for 2 mins 2. Stir in sachet contents, leave for another 2 mins while you check out @POTNOODLE 3. Seize your opportunity! Strike while the pot's hot! Do not reheat!

Storage Instructions

Store in a cool, dry place

Shelf Life from Time of Production 270 Days

**ACCREDITATIONS/
CERTIFICATIONS/
ASSURANCE
SCHEMES**

FSSC 22000
School Approved (The Requirement for School Food Regulation 2014)

Roundtable of Sustainable Palm Oil (RSPO)
Other Accreditation

ORIGIN	Product Country of Origin		United Kingdom				
	Additional Origin Details						
	SU=Crumlin						
PRODUCT CHARACTERISTICS CONFIGURATION	Origin of the Primary Ingredient						
	Standards Testing						
	Case Configuration			Inner Pack Configuration			
	Total Quantity of Inner Components in Outer Case		12 Units				
	Is the Outer Case Splittable?		Yes				
PRODUCT WEIGHTS	Inner Component						
	Variable Weight Consumer Item		No				
	Inner Component Weight		90 g				
	Outer Case						
	Outer Case Gross Weight		1.54 kg				
	Outer Case Net Weight		1.08 kg				
PRODUCT DIMENSIONS	Inner Component						
	Inner Component Depth		98 mm				
	Inner Component Width		98 mm				
	Inner Component Height		110 mm				
	Outer Case						
	Outer Case Depth		395 mm				
	Outer Case Width		295 mm				
	Outer Case Height		112 mm				
	PALLET INFORMATION	Quantity of Cases Per Pallet Layer		10 Cases		Pallet Height	
Quantity of Layers Per Pallet		9 Layers		Pallet Gross Weight		165.7 kg	
Quantity of Cases Per Pallet		90 Cases					
Inner Component Packaging							
PACKAGING	Type	Materials	Weight	Recycled Material %	Recyclable	Returnable	Composite
	Pot	Plastic	19.5 g				
	Pot	Aluminium	0.89 g				
MARKETING INFORMATION	Marketing Description						
	Pot Noodles in a delicious Beef and Tomato flavour sauce with vegetables and a little sachet of Tomato Sauce for that extra boost in taste.						
OTHER INFORMATION	Manufacturer Comments						
	N/A						

CONTACT
INFORMATION

Address

Unilever UK Limited
Lever House
3 St James Road
KT1 2BA
Kingston Upon Thames
England

Bihter.Pamay@unilever.com
020 8547 8989

Technical

Theresa Crayston
Theresa.Crayston@unilever.com
07825008860
R&D Assistant Deploy Manager UFS

Commercial

Iwan Phillips
Iwan.Phillips@unilever.com
+44 7795 645460
Route to Market, Away From Home

Complaints

via the Careline - details on pack
0800 783 3728

The information on the [Erudus System](#) has been supplied by the manufacturers of the products and, whilst the owners of the Erudus System take steps to ensure the information is regularly updated, they give no warranty and no guarantee that the information is accurate. Product information and ingredients may change, please always read product labels carefully in addition to using the information provided by Erudus.

We do not accept liability for any inaccuracies or incorrect information contained on this site.
Please visit <http://www.erudus.com/terms-and-conditions> for full terms and conditions.