

Changed Sep 10, 2025 12:14

Reviewed Sep 10, 2025 12:14

Erudus ID cc67927df5064bf1b613d1eb78a353fc

Version 3.0

Status Published

19830

# Lipton Ice Tea Lemon 500ml x 24

Still Soft Drink With Tea Extract And Lemon Juice With Sugars And Sweetener 24x500ml

## PRODUCT DESCRIPTION

Does Not Contain Preservatives Does Not Contain Colours Contains Naturally Sourced Sweetener(s)

Contains Artificial Flavouring(s) Suitable for vegetarians and vegans

Brand	<a href="#">Britvic Soft Drinks Limited</a>
Manufacturer Product Code	201257
Manufacturer Version	v1
Number	
Product Type	Drink
Product Category	Tea & Coffee
Storage Type	Ambient
Erudus ID	cc67927df5064bf1b613d1eb78a353fc
Specification Type	Drinks



Inner Component GTIN	5000118047794
Manufacturer Component Code	21838/003/P01
Outer Case GTIN	04060800172099



## INGREDIENTS

### Ingredient Declaration

Water, Sugars (Sucrose, Fructose), Acids (Citric Acid, Malic Acid), Black Tea Extract (0.12%), Lemon Juice from Concentrate (0.1%), Acidity Regulator (Trisodium Citrate), Flavourings, Antioxidant (Ascorbic Acid), Sweetener (Steviol Glycosides from Stevia).

## ALLERGENS

*Product Contains:*

<b>Celery/Celery</b>	No	<b>Mustard</b>	No
<b>Cereals Containing Gluten</b>	No	<b>Nuts (Tree)</b>	No
<b>Barley</b>	No	<b>Almond nuts</b>	No
<b>Oats</b>	No	<b>Brazil nuts</b>	No
<b>Rye</b>	No	<b>Cashew nuts</b>	No
<b>Wheat (including Spelt and Khorasan)</b>	No	<b>Hazelnuts</b>	No
<b>Crustacea</b>	No	<b>Macadamia (Queensland) nuts</b>	No
<b>Eggs</b>	No	<b>Pecan nuts</b>	No
<b>Fish</b>	No	<b>Pistachio nuts</b>	No
<b>Lupin</b>	No	<b>Walnuts</b>	No
<b>Milk</b>	No	<b>Peanuts</b>	No
<b>Molluscs</b>	No	<b>Sesame Seeds</b>	No
		<b>Soybeans</b>	No
		<b>Sulphur Dioxide and Sulphites</b>	No

SUPPLEMENTARY  
INGREDIENT  
INFORMATION

Palm Oil	No	CBD Concentration per Unit	0 mg
Hydrogenated Vegetable Oil/Fat	No		
GM Protein/DNA	No		

ADDITIVES

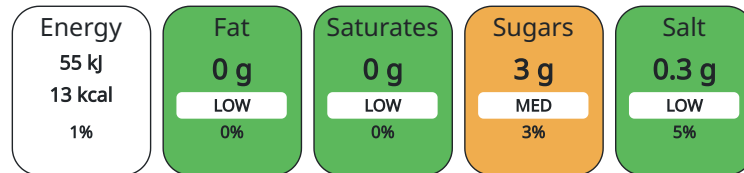
<i>Product Contains:</i>			
Artificial Antioxidants	No	Artificial Flavourings	Yes
Artificial Colours	No	Artificial Preservatives	No
Artificial Flavour Enhancers	No	Artificial Sweeteners	No

DIET SUITABILITY

Vegan Diet	Suitable for	Vegetarian Diet	Suitable for
Halal Diet	Suitable for	Kosher Diet	Suitable for

NUTRITIONAL  
INFORMATION AS  
SOLD

Each 100g/ml portion contains:



of your reference intake.

Typical values per 100g/ml : Energy 13kcal / 55kj

Nutrient	per 100ml	RI per 100ml
Energy (kJ)	55 kJ	1%
Energy (kcal)	13 kcal	1%
Fat	0 g	
of which Saturates	0 g	
of which Mono-unsaturates	0 g	
of which Polyunsaturates	0 g	
Carbohydrate	3.1 g	1%
of which Sugars	3 g	3%
Protein	0 g	
Salt	0.3 g	5%

NUTRITIONAL  
INFORMATION AS  
PREPARED

Nutrient	per 100g/ml prepared	RI per 100g/ml prepared
Energy (kcal)		

HFSS (HIGH IN  
FAT, SALT AND  
SUGAR)

HFSS Status	No
HFSS Score	0

HANDLING &  
STORAGE  
INFORMATION

<b>Directions For Use</b>	
Ready to drink	
<b>Storage Instructions</b>	
Store in a cool and dry place	
Shelf Life from Time of Production	270 Days
Shelf Life From Opening	0 Days

ORIGIN

Product Country of Origin	United Kingdom
Origin of the Primary Ingredient	Not Applicable

PRODUCT CHARACTERISTICS CONFIGURATION

Standards Testing

Case Configuration

<b>Variable Inner Components in Outer Case</b>	No
<b>Total Quantity of Inner Components in Outer Case</b>	24 Units
<b>Is the Outer Case Splittable?</b>	Yes

Inner Pack Configuration

PRODUCT WEIGHTS

Inner Component

<b>Inner Component Volume</b>	500 ml
-------------------------------	--------

Outer Case

<b>Outer Case Gross Weight</b>	12.8 kg
<b>Outer Case Net Weight</b>	12.21 kg

PRODUCT DIMENSIONS

Inner Component

<b>Inner Component Depth</b>	65 mm
<b>Inner Component Width</b>	65 mm
<b>Inner Component Height</b>	221 mm
<b>Inner Component Diameter</b>	65 mm

Outer Case

<b>Outer Case Depth</b>	390 mm
<b>Outer Case Width</b>	260 mm
<b>Outer Case Height</b>	223 mm

PALLET INFORMATION

<b>Quantity of Cases Per Pallet Layer</b>	10 Cases
<b>Quantity of Layers Per Pallet</b>	6 Layers
<b>Quantity of Cases Per Pallet</b>	60 Cases

<b>Pallet Type</b>	UK Standard Pallet
<b>Pallet Height</b>	1.52 MTR
<b>Pallet Gross Weight</b>	799 kg

MARKETING INFORMATION

Marketing Description

Brighten your day with Lipton Peach Ice Tea. It's the perfect soft drink to refresh your body and mind; enjoy the sweet and refreshing blend of 100% black tea extract and the fruity burst of peach flavour in every sip. Low in calories and free from artificial flavours, colours and preservatives, this fruity iced tea is the ultimate guilt-free thirst-quencher, whatever the weather.

OTHER INFORMATION CONTACT INFORMATION

Address

Britvic Soft Drinks Limited  
 Breakspear Park  
 Breakspear Way  
 HP2 4TZ  
 Hemel Hempstead  
 Hertfordshire  
 United Kingdom

Graham.Townes@britvic.com

Technical

Nikki Burton  
 TechnicalInformationRequests@britvic.com  
 +44 (0) 7736747481  
 Technical Specifications Manager

The information on the [Erudus System](#) has been supplied by the manufacturers of the products and, whilst the owners of the Erudus System take steps to ensure the information is regularly updated, they give no warranty and no guarantee that the information is accurate. Product information and ingredients may change, please always read product labels carefully in addition to using the information provided by Erudus.

We do not accept liability for any inaccuracies or incorrect information contained on this site. Please visit <http://www.erudus.com/terms-and-conditions> for full terms and conditions.