

Changed Sep 16, 2021 09:03

Reviewed Jan 15, 2024 13:36

Erudus ID 82e5dff4108148c1aa969e02ac77406e

Version 1.0

Status Published

19833

# CADBURY CRUNCHIE 110G ROCKS 10CA

Cadbury Crunchie 110g Rocks 10ca

## PRODUCT DESCRIPTION

CADBURY CRUNCHIE CHOCOLATE ROCKS

Brand	<a href="#">Mondelez UK Ltd</a>
Manufacturer Product Code	131189
Product Type	Food
Product Category	Confectionery
Storage Type	Ambient
Erudus ID	82e5dff4108148c1aa969e02ac77406e
Specification Type	Legacy

Inner Component GTIN 7622210285485

Outer Case GTIN 7622210285799



## INGREDIENTS

### Ingredient Declaration

Ingredients: Sugar, maize, cocoa butter, cocoa mass, skimmed MILK powder, glucose syrup, whey permeate powder (from MILK), palm oil, MILK fat, salt, emulsifiers (E442, E476, sunflower lecithin), raising agent (E500), BARLEY malt extract, flavouring.

## ALLERGENS

### Product Contains:

Celery/Celeriac	No	Mustard	No
Cereals Containing Gluten	Yes	Nuts (Tree)	May Contain
Barley	Yes	Almond nuts	No
Oats	No	Brazil nuts	No
Rye	No	Cashew nuts	No
Wheat (including Spelt and Khorasan)	May Contain	Hazelnuts	No
Gluten content <20ppm	No	Macadamia (Queensland) nuts	No
Crustacea	No	Pecan nuts	No
Eggs	No	Pistachio nuts	No
Fish	No	Walnuts	No
Lupin	No	Peanuts	No
Milk	Yes	Sesame Seeds	No
Molluscs	No	Soybeans	No
		Sulphur Dioxide and Sulphites	No

### Risk Source:

### Additional Allergen Information

MAY CONTAIN NUTS, WHEAT.

SUPPLEMENTARY  
INGREDIENT  
INFORMATION

Palm Oil	Yes
Hydrogenated Vegetable Oil/Fat	No
GM Protein/DNA	No

ADDITIVES

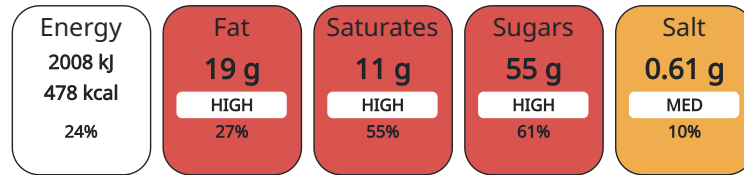
Product Contains:

DIET SUITABILITY

Suitable for Coeliacs	No	Halal Diet	No
Kosher Diet	No	Vegetarian Diet	No
Vegan Diet	No		

NUTRITIONAL  
INFORMATION

Each 100g/ml portion contains:



of your reference intake.

Typical values per 100g/ml : Energy 478kcal / 2008kJ

Nutrient	per 100g/ml	RI per 100g/ml
Energy (kJ)	2008 kJ	24%
Energy (kcal)	478 kcal	24%
Fat	19 g	27%
of which Saturates	11 g	55%
Carbohydrate	71 g	27%
of which Sugars	55 g	61%
Fibre	2 g	
Protein	4.7 g	9%
Salt	0.61 g	10%

HANDLING &  
STORAGE  
INFORMATION

Directions For Use

Ready To Eat

Storage Instructions

STORE IN A DRY PLACE. PROTECT FROM HEAT.

Shelf Life from Time of Production 365 Days

ORIGIN

Product Country of Origin Poland

PRODUCT  
CHARACTERISTICS  
CONFIGURATION

Standards Testing

Case Configuration

Inner Pack Configuration

Total Quantity of Inner Components in 10 Units

Outer Case

PRODUCT  
WEIGHTS

Inner Component

Variable Weight Consumer Item No

Weight/Volume

110G

Outer Case

Outer Case Gross Weight 1.31 kg

Outer Case Net Weight 1.1 kg

PRODUCT DIMENSIONS

Inner Component	
Inner Component Depth	37 mm
Inner Component Width	112 mm
Inner Component Height	165 mm
Outer Case	
Outer Case Depth	385 mm
Outer Case Width	118 mm
Outer Case Height	167 mm

PALLET INFORMATION

Quantity of Cases Per Pallet Layer	25 Cases	Pallet Height	1.67 MTR
Quantity of Layers Per Pallet	9 Layers	Pallet Gross Weight	322.3 kg
Quantity of Cases Per Pallet	225 Cases		

PACKAGING

Inner Component Packaging						
Type	Materials	Weight	Recycled Material %	Recyclable	Returnable	Composite
Bag	Plastic	46.4 g				
Outer Case Packaging						
Type	Materials	Weight	Recycled Material %	Recyclable	Returnable	Composite
Case	Paper/Cardboard	161 g				

OTHER INFORMATION CONTACT INFORMATION

**Address**

Mondelez UK Ltd  
 PO Box 12  
 Bournville Lane  
 B30 2LU  
 Bournville  
 Birmingham  
 England

thomas.brooks@mdlz.com  
 +44 1214 582 000

**Technical**

Tomas Sakalik  
 tomas.sakalik@mdlz.com  
 Publication Expert

The information on the [Erudus System](#) has been supplied by the manufacturers of the products and, whilst the owners of the Erudus System take steps to ensure the information is regularly updated, they give no warranty and no guarantee that the information is accurate. Product information and ingredients may change, please always read product labels carefully in addition to using the information provided by Erudus.

We do not accept liability for any inaccuracies or incorrect information contained on this site. Please visit <http://www.erudus.com/terms-and-conditions> for full terms and conditions.