

19854

# Fanta Pineapple And Grapefruit 330ml x24

Fanta Pineapple And Grapefruit 24x0.35kg

## PRODUCT DESCRIPTION

Fanta Pineapple And Grapefruit 330ml x24 Can PM 75p

Brand	<a href="#">Coca-Cola</a>
Manufacturer Product Code	641091
Product Type	Drink
Product Category	Drinks - General
Storage Type	Ambient
Erudus ID	b2cb6e832b394a1bbee32603c3869947
Specification Type	Legacy

Inner Component GTIN	05000112662238
Outer Case GTIN	05017726432607



## INGREDIENTS

### Ingredient Declaration

Carbonated Water, Fruit Juices From Concentrate 5% (Pineapple, Grapefruit), Sugar, Acid (Citric Acid), Antioxidant (Ascorbic Acid), Sweeteners (Acesulfame K, Aspartame, Sodium Saccharin), Preservative (Potassium Sorbate), Flavourings, Stabilisers (Acacia Gum, Guar Gum, Sucrose Acetate Isobutyrate, Glycerol Esters Of Wood Rosins), Colour (Carotenes).

## ALLERGENS

### Product Contains:

<b>Celery/Celery</b>	No	<b>Mustard</b>	No
<b>Cereals Containing Gluten</b>	No	<b>Nuts (Tree)</b>	No
<b>Barley</b>	No	<b>Almond nuts</b>	No
<b>Oats</b>	No	<b>Brazil nuts</b>	No
<b>Rye</b>	No	<b>Cashew nuts</b>	No
<b>Wheat (including Spelt and Khorasan)</b>	No	<b>Hazelnuts</b>	No
<b>Crustacea</b>	No	<b>Macadamia (Queensland) nuts</b>	No
<b>Eggs</b>	No	<b>Pecan nuts</b>	No
<b>Fish</b>	No	<b>Pistachio nuts</b>	No
<b>Lupin</b>	No	<b>Walnuts</b>	No
<b>Milk</b>	No	<b>Peanuts</b>	No
<b>Molluscs</b>	No	<b>Sesame Seeds</b>	No
		<b>Soybeans</b>	No
		<b>Sulphur Dioxide and Sulphites</b>	No

## SUPPLEMENTARY INGREDIENT INFORMATION

<b>Palm Oil</b>	No
<b>Hydrogenated Vegetable Oil/Fat</b>	No
<b>GM Protein/DNA</b>	No

ADDITIVES

Product Contains:

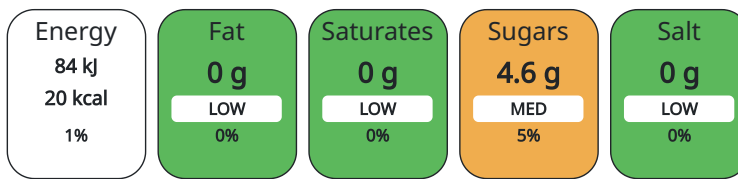
Artificial Antioxidants	No	Artificial Flavourings	Yes
Artificial Colours	Yes	Artificial Preservatives	Yes
Artificial Flavour Enhancers	No	Artificial Sweeteners	Yes

DIET SUITABILITY

Suitable for Coeliacs	Yes	Halal Diet	Suitable for
Kosher Diet	Suitable for	Vegetarian Diet	Suitable for
Vegan Diet	Suitable for		

NUTRITIONAL INFORMATION

Each 100g/ml portion contains:



of your reference intake.

Typical values per 100g/ml : Energy 20kcal / 84kj

Nutrient	per 100g/ml	RI per 100g/ml
Energy (kJ)	84 kJ	1%
Energy (kcal)	20 kcal	1%
Fat	0 g	
of which Saturates	0 g	
Carbohydrate	4.6 g	2%
of which Sugars	4.6 g	5%
Protein	0 g	
Salt	0 g	

HFSS (HIGH IN FAT, SALT AND SUGAR) HANDLING & STORAGE INFORMATION

HFSS Status	No
Directions For Use	Best served chilled.
Storage Instructions	Store in a cool dry place.
Shelf Life from Time of Production	360 Days

ORIGIN

Product Country of Origin	Great Britain
---------------------------	---------------

PRODUCT CHARACTERISTICS CONFIGURATION

Standards Testing	
Case Configuration	Inner Pack Configuration
Total Quantity of Inner Components in Outer Case	24 Units
Is the Outer Case Splittable?	No

PRODUCT WEIGHTS

Inner Component	
Variable Weight Consumer Item	No
Inner Component Weight	0.35 kg
Outer Case	
Outer Case Gross Weight	8.42 kg
Outer Case Net Weight	8.05 kg

PRODUCT DIMENSIONS

Inner Component	
Inner Component Depth	67 mm
Inner Component Width	67 mm
Inner Component Height	116 mm
Outer Case	
Outer Case Depth	404 mm
Outer Case Width	271 mm
Outer Case Height	118 mm

PALLET INFORMATION

Quantity of Cases Per Pallet Layer	10 Cases	Pallet Height	1.57 MTR
Quantity of Layers Per Pallet	12 Layers	Pallet Gross Weight	1040.18 kg
Quantity of Cases Per Pallet	120 Cases		

PACKAGING

Inner Component Packaging						
Type	Materials	Weight	Recycled Material %	Recyclable	Returnable	Composite
Can	Aluminium	295.2 g				
Outer Case Packaging						
Type	Materials	Weight	Recycled Material %	Recyclable	Returnable	Composite
Case	Plastic	16.98 g				
Case	Paper/Cardboard	51.2 g				

OTHER INFORMATION CONTACT INFORMATION

<p><b>Address</b></p> <p>Coca-Cola  Coca-Cola Europacific Partners Great Britain Limited  Pemberton House, Bakers Road  UB8 1EZ  Uxbridge  United Kingdom</p> <p>contact@ccep.com  08081000000</p>	<p><b>Technical</b></p> <p>Data Queries  npidataexchange@ccep.com</p>
--	---

The information on the [Erudus System](#) has been supplied by the manufacturers of the products and, whilst the owners of the Erudus System take steps to ensure the information is regularly updated, they give no warranty and no guarantee that the information is accurate. Product information and ingredients may change, please always read product labels carefully in addition to using the information provided by Erudus.

We do not accept liability for any inaccuracies or incorrect information contained on this site. Please visit <http://www.erudus.com/terms-and-conditions> for full terms and conditions.