

Changed Jul 14, 2025 11:39

Reviewed Jul 14, 2025 11:39

Erudus ID d5748a68e96047d0a72d1e3ef02c16df

Version 2.0

Status Published

19983

# Huel Ready-to-drink Chocolate 500ml

Huel Rtd Chocolate 12x500ml 8x538g

## PRODUCT DESCRIPTION

Chocolate flavour nutritionally complete drink with natural flavourings and sweetener.

Brand	<a href="#">Huel</a>
Manufacturer Product Code	RTD8-CHO-10R
Product Type	Food
Product Category	Other
Storage Type	Ambient
Erudus ID	d5748a68e96047d0a72d1e3ef02c16df
Specification Type	Generic

Inner Component GTIN	5060495113291
Outer Case GTIN	15060929633460



## INGREDIENTS

### Ingredient Declaration

"Ingredients: Water, Pea Protein, Tapioca Starch, Gluten-Free Flour, Rapeseed Oil, Cocoa Powder (1.5%), Ground Flaxseed, Soluble Vegetable Fibre (Chicory Root, Corn), Medium-Chain Triglyceride Powder (from Coconut), Micronutrient Blend (Minerals (Potassium, Chloride, Calcium, Magnesium, Phosphorus, Copper, Zinc, Iodine, Chromium), Vitamins (C, K, E, A, Niacin, D, B12, Pantothenic Acid, Biotin, B6, B2, B1, Folate), Choline), Natural Flavourings, Brown Rice Flour, Coconut Sugar, Emulsifier: Sunflower Lecithin, Thickener: Gellan Gum, Sea Salt, Sweetener: Sucralose."

## ALLERGENS

### Product Contains:

Celery/Celериac	No	Mustard	No
Cereals Containing Gluten	No	Nuts (Tree)	No
Barley	No	Almond nuts	No
Oats	No	Brazil nuts	No
Rye	No	Cashew nuts	No
Wheat (including Spelt and Khorasan)	No	Hazelnuts	No
Crustacea	No	Macadamia (Queensland) nuts	No
Eggs	No	Pecan nuts	No
Fish	No	Pistachio nuts	No
Lupin	No	Walnuts	No
Milk	No	Peanuts	No
Molluscs	No	Sesame Seeds	No
		Soybeans	No
		Sulphur Dioxide and Sulphites	No

FREE FROM CLAIMS

Free From Barley	Yes	Free From Nuts	Yes
Free From Celery/Celeriac	Yes	Free From Oats	Yes
Free From Crustacea	Yes	Free From Peanuts	Yes
Free From Eggs	Yes	Free From Rye	Yes
Free From Fish	Yes	Free From Sesame	Yes
Gluten-Free	Yes	Free From Soybeans	Yes
Free From Lactose	Yes	Free From Sulphur Dioxide	Yes
Free From Lupin	Yes	Free From Wheat	Yes
Free From Milk	Yes		
Free From Molluscs	Yes		

SUPPLEMENTARY INGREDIENT INFORMATION

Palm Oil	No	Alcoholic Strength %Vol (ABV)	0 % Vol
Hydrogenated Vegetable Oil/Fat	No	CBD Concentration per Unit	0 mg
GM Protein/DNA	No		

ADDITIVES

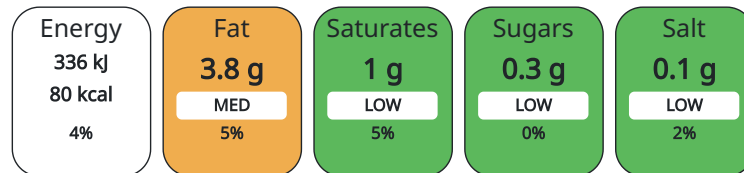
Product Contains:

DIET SUITABILITY

Vegan Diet	Certified	Halal Diet	No
Kosher Diet	Suitable for		

NUTRITIONAL INFORMATION AS SOLD

Each 100g/ml portion contains:



of your reference intake.

Typical values per 100g/ml : Energy 80kcal / 336kJ

Nutrient	per 100ml	RI per 100ml	per 500ml serving	RI per 500ml serving
Energy (kJ)	336 kJ	4%	1680	20%
Energy (kcal)	80 kcal	4%	400	20%
Fat	3.8 g	5%	19 g	27%
of which Saturates	1 g	5%	5 g	25%
of which Mono-unsaturates	1.6 g		8 g	
of which Polyunsaturates	1.2 g		6 g	
Carbohydrate	6.7 g	3%	33.5 g	13%
of which Sugars	0.3 g	0%	1.5 g	2%
Fibre	1.4 g		7 g	
Protein	4 g	8%	20 g	40%
Salt	0.1 g	2%	0.5 g	8%

Serving Size	500 ml
Serving Size Description	This bottle contains one portion
Number of Servings	1 Servings

NUTRITIONAL  
INFORMATION AS  
PREPARED

Nutrient	per 100g/ml prepared	RI per 100g/ml prepared	per 500ml prepared	RI per 500g/ml prepared
Energy (kj)			1680 kj	20%
Energy (kcal)			400 kcal	20%
Fat			19 g	27%
of which Saturates			5 g	25%
of which Mono-unsaturates			8 g	
of which Polyunsaturates			5.8 g	
Carbohydrate			34 g	13%
of which Sugars			1.7 g	2%
Fibre			7.2 g	
Protein			20 g	40%
Salt			0.52 g	9%

VITAMINS AND  
MINERALS AS  
SOLD

Nutrient	per 100ml	RI per 100ml	per 500ml serving	RI per 500ml serving
Vitamin A	36 µg	5%	180 µg	23%
Vitamin D	1 µg	20%	5 µg	100%
Vitamin E	0.64 mg	5%	3.2 mg	27%
Vitamin K	7 µg	9%	35 µg	47%
Vitamin C	12 mg	15%	60 mg	75%
Thiamin (B1)	0.05 mg	5%	0.25 mg	23%
Riboflavin (B2)	0.06 mg	4%	0.3 mg	21%
Niacin (B3)	0.64 mg	4%	3.2 mg	20%
Vitamin B6	0.07 mg	5%	0.35 mg	25%
Folate/Folic Acid	16 µg	8%	80 µg	40%
Vitamin B12	0.16 µg	6%	0.8 µg	32%
Biotin (B7)	3 µg	6%	15 µg	30%
Pantothenic acid	0.24 mg	4%	1.2 mg	20%
Potassium	188 mg	9%	940 mg	47%
Chloride	92 mg	12%	460 mg	58%
Calcium	52 mg	7%	260 mg	33%
Phosphorus	60 mg	9%	300 mg	43%
Magnesium	16.8 mg	4%	84 mg	22%
Iron	1 mg	7%	5 mg	36%
Zinc	0.44 mg	4%	2.2 mg	22%
Copper	0.04 mg	4%	0.2 mg	20%
Manganese	0.09 mg	5%	0.45 mg	23%
Selenium	2.2 µg	4%	11 µg	20%
Chromium	1.6 µg	4%	8 µg	20%
Molybdenum	2 µg	4%	10 µg	20%
Iodine	6 µg	4%	30 µg	20%

HFSS (HIGH IN  
FAT, SALT AND  
SUGAR)

HFSS Status	Yes
HFSS Score	-2

HANDLING &  
STORAGE  
INFORMATION

**Directions For Use**

Store in a cool dry place. Best served chilled. Once open refrigerate and consume within 12 hours. Do not freeze. Shake to wake.  
Ready to drink.

**Storage Instructions**

Store in a cool dry place. Once open refrigerate and consume within 12 hours. Do not freeze.

**Storage Instructions After Opening**

Once open refrigerate and consume within 12 hours. Shake to wake. Ready to drink.

<b>Shelf Life from Time of Production</b>	456 Days
<b>Shelf Life From Opening</b>	1 Days

ACCREDITATIONS/  
CERTIFICATIONS/  
ASSURANCE  
SCHEMES  
ORIGIN

<b>B Corp Certification</b>	
<b>Product Country of Origin</b>	United Kingdom
<b>Origin of the Primary Ingredient</b>	United Kingdom

PRODUCT  
CHARACTERISTICS  
CONFIGURATION

Standards Testing	
Case Configuration	Inner Pack Configuration
<b>Total Quantity of Inner Components in Outer Case</b>	8 Units
<b>Is the Outer Case Splittable?</b>	Yes

PRODUCT  
WEIGHTS

Inner Component	
<b>Variable Weight Consumer Item</b>	No
<b>Inner Component Weight</b>	538 g
<b>Inner Component Volume</b>	500 ml
Outer Case	
<b>Outer Case Gross Weight</b>	4.35 kg
<b>Outer Case Net Weight</b>	4.35 kg

PRODUCT  
DIMENSIONS

Inner Component	
<b>Inner Component Depth</b>	60 mm
<b>Inner Component Width</b>	60 mm
<b>Inner Component Height</b>	218 mm
<b>Inner Component Diameter</b>	60 mm
Outer Case	
<b>Outer Case Depth</b>	246 mm
<b>Outer Case Width</b>	124 mm
<b>Outer Case Height</b>	221 mm

PALLET  
INFORMATION

<b>Quantity of Cases Per Pallet Layer</b>	36 Cases	<b>Pallet Type</b>	UK Standard Pallet
<b>Quantity of Layers Per Pallet</b>	5 Layers	<b>Pallet Height</b>	1.35 MTR
<b>Quantity of Cases Per Pallet</b>	180 Cases		

PACKAGING

Inner Component Packaging

Type	Materials	Weight	Recycled Material %	Recyclable	Returnable	Composite
Bottle	Plastic / PET (Polyethylene Terethphalate)	38 g	51 %	Yes		
Sleeve	Plastic / PET (Polyethylene Terethphalate)	38 g		Yes		
Cap	Plastic / HDPE (High Density Polyethylene)	38 g		Yes		

Outer Case Packaging

Type	Materials	Weight	Recycled Material %	Recyclable	Returnable	Composite
Box	Paper/Cardboard / Cardboard	38 g		Yes		
Shrink Wrap	Plastic	38 g				

MARKETING INFORMATION

Marketing Description

This isn't just a protein drink. This is the most convenient meal you'll ever have. Huel is perfect for when you're short on time - just shake, sip and enjoy. Formulated by nutritionists, each bottle is a 100% nutritionally complete meal, packed with: - 26 essential vitamins & minerals - 20g protein - 8g fibre - Low sugar - Gluten-free - 172 health benefits ([uk.huel.com/benefits](http://uk.huel.com/benefits))

OTHER INFORMATION  
CONTACT INFORMATION

<b>Commodity Code</b>	2202991999	<b>Value Added Tax Rate</b>	No VAT
<b>Address</b>	<b>Commercial</b>		
Huel	Jon Morris		
Unit 6, Ickniel Way Industrial Estate	Jon@huel.com		
HP23 4RN	07795661446		
Tring	Out of Home Controller		
United Kingdom			
Jon@huel.com			

The information on the [Erudus System](#) has been supplied by the manufacturers of the products and, whilst the owners of the Erudus System take steps to ensure the information is regularly updated, they give no warranty and no guarantee that the information is accurate. Product information and ingredients may change, please always read product labels carefully in addition to using the information provided by Erudus.

We do not accept liability for any inaccuracies or incorrect information contained on this site. Please visit <http://www.erudus.com/terms-and-conditions> for full terms and conditions.