

Changed Dec 10, 2025 11:39

Reviewed Dec 10, 2025 11:39

Erudus ID f2094b0ba31b417a840adf9a9209dc15

Version 2.1

Status Published

12677

# FANTA \* GLASS \* BOTTLES 24X 330ml

Carbonated Soft Drink 24x0.33kg

## PRODUCT DESCRIPTION

Sparkling orange fruit drink with sugar and sweeteners.



Brand	Fanta
Manufacturer	<a href="#">C Carnevale Limited</a>
Manufacturer Product Code	PP3236
Manufacturer Version	20/05/2022
Number	
Product Type	Drink
Product Category	Carbonated & Soft Drinks
Storage Type	Ambient
Erudus ID	f2094b0ba31b417a840adf9a9209dc15
Specification Type	Drinks



## INGREDIENTS

### Ingredient Declaration

Carbonated Water, Sugar, Orange Juice from Concentrate (3.7%), Citrus Fruit from Concentrate (1.3%), Acids (Citric Acid, Malic Acid), Vegetable Extracts (Carrot, Pumpkin), Sweeteners (Acesulfame K, Sucralose), Preservative (Potassium Sorbate), Acidity Regulator (Sodium Citrates), Stabiliser (Guar Gum), Natural Orange Flavourings with other Natural Flavourings, Antioxidant (Ascorbic Acid)

## ALLERGENS

*Product Contains:*

<b>Celery/Celeriac</b>	No	<b>Mustard</b>	No
<b>Cereals Containing Gluten</b>	No	<b>Nuts (Tree)</b>	No
<b>Barley</b>	No	<b>Almond nuts</b>	No
<b>Oats</b>	No	<b>Brazil nuts</b>	No
<b>Rye</b>	No	<b>Cashew nuts</b>	No
<b>Wheat (including Spelt and Khorasan)</b>	No	<b>Hazelnuts</b>	No
<b>Crustacea</b>	No	<b>Macadamia (Queensland) nuts</b>	No
<b>Eggs</b>	No	<b>Pecan nuts</b>	No
<b>Fish</b>	No	<b>Pistachio nuts</b>	No
<b>Lupin</b>	No	<b>Walnuts</b>	No
<b>Milk</b>	No	<b>Peanuts</b>	No
<b>Molluscs</b>	No	<b>Sesame Seeds</b>	No
		<b>Soybeans</b>	No
		<b>Sulphur Dioxide and Sulphites</b>	No

## SUPPLEMENTARY INGREDIENT INFORMATION

<b>GM Protein/DNA</b>	No
-----------------------	----

ADDITIVES

Product Contains:

DIET SUITABILITY

Vegan Diet

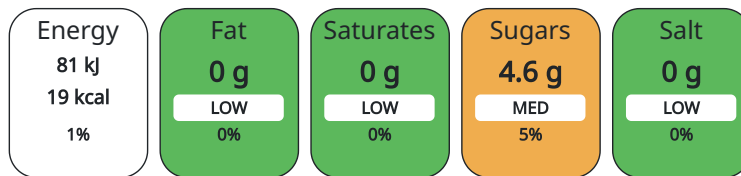
Suitable for

Vegetarian Diet

Suitable for

NUTRITIONAL INFORMATION AS SOLD

Each 100g/ml portion contains:



of your reference intake.

Typical values per 100g/ml : Energy 19kcal / 81kJ

Nutrient	per 100ml	RI per 100ml
Energy (kJ)	81 kJ	1%
Energy (kcal)	19 kcal	1%
Fat	0 g	
of which Saturates	0 g	
Carbohydrate	4.6 g	2%
of which Sugars	4.6 g	5%
Protein	0 g	
Salt	0 g	

HANDLING & STORAGE INFORMATION

Directions For Use

Pop the cap using a bottle opener and enjoy. Best served chilled.

Storage Instructions

Store cool and dry.

Shelf Life from Time of Production 360 Days

ORIGIN

Product Country of Origin Great Britain

Origin of the Primary Ingredient Great Britain

PRODUCT CHARACTERISTICS CONFIGURATION

Standards Testing

Case Configuration

Inner Pack Configuration

Total Quantity of Inner Components in 24 Units

Outer Case

PRODUCT WEIGHTS

Inner Component

Inner Component Weight 0.33 kg

Inner Component Volume 330 ml

Outer Case

Outer Case Gross Weight 12.75 kg

Outer Case Net Weight 8.05 kg

PRODUCT  
DIMENSIONS

Inner Component

**Inner Component Depth** 62.5 mm

**Inner Component Width** 62.5 mm

**Inner Component Height** 207 mm

Outer Case

**Outer Case Depth** 380 mm

**Outer Case Width** 255 mm

**Outer Case Height** 210 mm

PALLET  
INFORMATION

**Non Palletised** Yes

OTHER  
INFORMATION

**Manufacturer Comments**

Packaging materials and weights are calculated per selling unit.

CONTACT  
INFORMATION

**Address**

C Carnevale Limited

107 Blundell Street

N7 9BN

London

England

ivone.gaspar@carnevale.co.uk

020 7607 8777

**Technical**

technical@carnevale.co.uk

020 7607 8777 [ext. 3260 or 3261]

The information on the [Erudus System](#) has been supplied by the manufacturers of the products and, whilst the owners of the Erudus System take steps to ensure the information is regularly updated, they give no warranty and no guarantee that the information is accurate. Product information and ingredients may change, please always read product labels carefully in addition to using the information provided by Erudus.

We do not accept liability for any inaccuracies or incorrect information contained on this site.  
Please visit <http://www.erudus.com/terms-and-conditions> for full terms and conditions.