

Changed Jun 04, 2025 15:29

Reviewed Jun 04, 2025 15:29

Erudus ID 61c64406dc2e4a1c9e4555a19d6981c4

Version 1.0

Status Published

02003

# NESCAFE GOLD BLEND Decaf 10x300g

Nescafe Gold Blend Decaf 300g 10x300g

## PRODUCT DESCRIPTION

Decaffeinated freeze-dried soluble coffee.

Brand	<a href="#">Nestle UK</a>
Manufacturer Product Code	12612383
Product Type	Drink
Product Category	Tea & Coffee
Storage Type	Ambient
Erudus ID	61c64406dc2e4a1c9e4555a19d6981c4
Specification Type	Drinks

Inner Component GTIN	5000243703251
Outer Case GTIN	05000243000039



## INGREDIENTS

### Ingredient Declaration

Decaffeinated Soluble Coffee.

## ALLERGENS

### Product Contains:

Celery/Celeriac	No	Mustard	No
Cereals Containing Gluten	No	Nuts (Tree)	No
Barley	No	Almond nuts	No
Oats	No	Brazil nuts	No
Rye	No	Cashew nuts	No
Wheat (including Spelt and Khorasan)	No	Hazelnuts	No
Crustacea	No	Macadamia (Queensland) nuts	No
Eggs	No	Pecan nuts	No
Fish	No	Pistachio nuts	No
Lupin	No	Walnuts	No
Milk	No	Peanuts	No
Molluscs	No	Sesame Seeds	No
		Soybeans	No
		Sulphur Dioxide and Sulphites	No

## SUPPLEMENTARY INGREDIENT INFORMATION

Palm Oil	No
Hydrogenated Vegetable Oil/Fat	No
GM Protein/DNA	No

**ADDITIVES**

*Product Contains:*

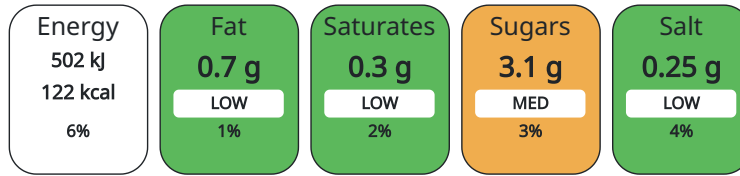
<b>Artificial Antioxidants</b>	No	<b>Artificial Flavourings</b>	No
<b>Artificial Colours</b>	No	<b>Artificial Preservatives</b>	No
<b>Artificial Flavour Enhancers</b>	No	<b>Artificial Sweeteners</b>	No

**DIET SUITABILITY**

<b>Vegan Diet</b>	Suitable for	<b>Vegetarian Diet</b>	Suitable for
<b>Halal Diet</b>	Suitable for	<b>Kosher Diet</b>	Suitable for

**NUTRITIONAL INFORMATION AS SOLD**

Each 100g/ml portion contains:



of your reference intake.

Typical values per 100g/ml : Energy 122kcal / 502kj

Nutrient	per 100g	RI per 100g
<b>Energy (kJ)</b>	502 kJ	6%
<b>Energy (kcal)</b>	122 kcal	6%
<b>Fat</b>	0.7 g	1%
<b>of which Saturates</b>	0.3 g	2%
<b>Carbohydrate</b>	3.1 g	1%
<b>of which Sugars</b>	3.1 g	3%
<b>Fibre</b>	34.1 g	
<b>Protein</b>	7.8 g	16%
<b>Salt</b>	0.25 g	4%

**HANDLING & STORAGE INFORMATION**

**Directions For Use**

For the Perfect Serve: Always use a dry measure and freshly boiled water (not boiling hot) 1 rounded teaspoon (minimum 1.8g) per mug 1 rounded teaspoon (minimum 6g) per pint

**Storage Instructions**

Store in a cool, dry place.

**Shelf Life from Time of Production** 540 Days

**ACCREDITATIONS/ CERTIFICATIONS/ ASSURANCE SCHEMES ORIGIN**

**FSSC 22000**

**Product Country of Origin** United Kingdom

**Origin of the Primary Ingredient** United Kingdom

**PRODUCT CHARACTERISTICS**

Standards Testing

<b>Do you undertake trend analysis of microbiological results?</b>	No	<b>Is shelf life testing undertaken?</b>	No
--	----	--	----

**CONFIGURATION**

Case Configuration Inner Pack Configuration

**Total Quantity of Inner Components in Outer Case** 10 Units

**Is the Outer Case Splittable?** No

PRODUCT WEIGHTS	Inner Component						
	<b>Inner Component Weight</b>		300 g				
	Outer Case						
PRODUCT DIMENSIONS	<b>Outer Case Gross Weight</b>		3.5 kg				
	<b>Outer Case Net Weight</b>		3 kg				
	Inner Component						
	<b>Inner Component Depth</b>		76 mm				
	<b>Inner Component Width</b>		145 mm				
	<b>Inner Component Height</b>		190 mm				
PALLET INFORMATION	Outer Case						
	<b>Outer Case Depth</b>		390 mm				
	<b>Outer Case Width</b>		210 mm				
	<b>Outer Case Height</b>		275 mm				
	<b>Quantity of Cases Per Pallet Layer</b>		15 Cases		<b>Pallet Height</b>		1.6 MTR
<b>Quantity of Layers Per Pallet</b>		5 Layers		<b>Pallet Gross Weight</b>		298 kg	
PACKAGING	<b>Quantity of Cases Per Pallet</b>		75 Cases				
	Inner Component Packaging						
MARKETING INFORMATION	<b>Type</b>	<b>Materials</b>	<b>Weight</b>	<b>Recycled Material %</b>	<b>Recyclable</b>	<b>Returnable</b>	<b>Composite</b>
	Poly Treated PET/PE	Plastic	12.1 g				
	Outer Case Packaging						
	<b>Type</b>	<b>Materials</b>	<b>Weight</b>	<b>Recycled Material %</b>	<b>Recyclable</b>	<b>Returnable</b>	<b>Composite</b>
	Case	Paper/Cardboard	269 g				
	<b>Marketing Description</b>						
	Rich aroma & smooth taste. Intensity: 6 100% responsibly sourced coffee* *This NESCAFE is 100% responsibly sourced coffee, supporting coffee farmers to improve their lands and livelihoods. Learn more about our responsible sourcing initiatives through the QR code.						
	OTHER INFORMATION						
	<b>Address</b>			<b>Complaints</b>			
	Contact our Professionals: Nestle Professional			consumer.services@uk.nestle.com			
Nestle Professional			0800 00 00 30 (UK)				
Haxby Road							
YO91 1WS							
York							
United Kingdom							
0800 00 0030 (UK)							

The information on the [Erudus System](#) has been supplied by the manufacturers of the products and, whilst the owners of the Erudus System take steps to ensure the information is regularly updated, they give no warranty and no guarantee that the information is accurate. Product information and ingredients may change, please always read product labels carefully in addition to using the information provided by Erudus.

We do not accept liability for any inaccuracies or incorrect information contained on this site.  
Please visit <http://www.erudus.com/terms-and-conditions> for full terms and conditions.