

08111

Walkers French Fries Worcester Sauce Snacks Crisps 21g x 32

Walkers Snacks French Fries Worcester Sauce 32x21g

PRODUCT DESCRIPTION

Walkers Snacks French Fries Worcester Sauce 21g

Brand	Walkers Snacks Limited (PepsiCo)
Manufacturer Product Code	300002521
Product Type	Food
Product Category	Nuts and Seeds
Storage Type	Ambient
Erudus ID	974a941c9d8a466b8888d116ee9fd6b2
Specification Type	Legacy



Inner Component GTIN	05000328970103
Outer Case GTIN	05000328565217



INGREDIENTS

Ingredient Declaration

Potato Granules, Potato Starch, Sunflower Oil, Worcester Sauce Flavour [Flavourings, Salt, Sugar, Acid (Citric acid), Fructose, Dried Onion, Dried Garlic, Spices, Cocoa Powder, Yeast extract], Colour (Paprika Extract, Annatto Norbixin), Flavour Enhancer (Monosodium Glutamate)

ALLERGENS

Product Contains:

Celery/Celeriac	No	Mustard	No
Cereals Containing Gluten	May Contain	Nuts (Tree)	No
Barley	May Contain	Almond nuts	No
Oats	No	Brazil nuts	No
Rye	No	Cashew nuts	No
Wheat (including Spelt and Khorasan)	May Contain	Hazelnuts	No
Crustacea	No	Macadamia (Queensland) nuts	No
Eggs	No	Pecan nuts	No
Fish	No	Pistachio nuts	No
Lupin	No	Walnuts	No
Milk	May Contain	Peanuts	No
Molluscs	No	Sesame Seeds	No
		Soybeans	May Contain
		Sulphur Dioxide and Sulphites	No

Risk Source:

SUPPLEMENTARY
INGREDIENT
INFORMATION
ADDITIVES

GM Protein/DNA No

Product Contains:

Artificial Antioxidants No

Artificial Colours No

Artificial Flavour Enhancers Yes

DIET SUITABILITY

Suitable for Coeliacs No

Halal Diet No

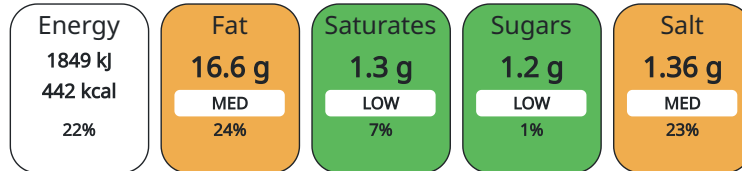
Kosher Diet No

Vegetarian Diet No

Vegan Diet No

NUTRITIONAL
INFORMATION

Each 100g/ml portion contains:



of your reference intake.

Typical values per 100g/ml : Energy 442kcal / 1849kJ

Nutrient	per 100g/ml	RI per 100g/ml
Energy (kJ)	1849 kJ	22%
Energy (kcal)	442 kcal	22%
Fat	16.6 g	24%
of which Saturates	1.3 g	7%
Carbohydrate	65.6 g	25%
of which Sugars	1.2 g	1%
Fibre	3.3 g	
Protein	5.7 g	11%
Salt	1.36 g	23%

HFSS (HIGH IN
FAT, SALT AND
SUGAR)
HANDLING &
STORAGE
INFORMATION

HFSS Status Yes

Directions For Use

This pack contains 1 serving

Storage Instructions

Store in a cool, dry place.

Shelf Life from Time of Production 112 Days

ORIGIN

Product Country of Origin United Kingdom

PRODUCT
CHARACTERISTICS
CONFIGURATION

Standards Testing

Case Configuration

Inner Pack Configuration

Total Quantity of Inner Components in 32 Units

Outer Case

PRODUCT WEIGHTS

Inner Component	
Variable Weight Consumer Item	No
Inner Component Weight	21 g
Outer Case	
Outer Case Gross Weight	1 kg
Outer Case Net Weight	0.67 kg

PRODUCT DIMENSIONS

Inner Component	
Inner Component Depth	30 mm
Inner Component Width	127 mm
Inner Component Height	175 mm
Outer Case	
Outer Case Depth	399 mm
Outer Case Width	299 mm
Outer Case Height	200 mm

PALLET INFORMATION

Quantity of Cases Per Pallet Layer	10 Cases
Quantity of Layers Per Pallet	11 Layers
Quantity of Cases Per Pallet	110 Cases

Pallet Height 2.2 MTR

OTHER INFORMATION CONTACT INFORMATION

Address

Walkers Snacks Limited (PepsiCo)
450 South Oak Way
Green Park
RG2 6UW
Reading
United Kingdom

karthick.s@pepsico.com
07824608485

Commercial

Olivia.Greenaway@pepsico.com
olivia.greenaway@pepsico.com

The information on the [Erudus System](#) has been supplied by the manufacturers of the products and, whilst the owners of the Erudus System take steps to ensure the information is regularly updated, they give no warranty and no guarantee that the information is accurate. Product information and ingredients may change, please always read product labels carefully in addition to using the information provided by Erudus.

We do not accept liability for any inaccuracies or incorrect information contained on this site.
Please visit <http://www.erudus.com/terms-and-conditions> for full terms and conditions.